

## Claudin 3 antibody

**Cat. No. GTX00665**

<b>Host</b>	Rabbit
<b>Clonality</b>	Polyclonal
<b>Isotype</b>	IgG
<b>Applications</b>	WB, IHC-P
<b>Reactivity</b>	Human, Mouse

References ( 1 )

Package

100 µl

## Applications

**Application Note**

\*Optimal dilutions/concentrations should be determined by the researcher.

Suggested dilution	Recommended dilution
WB	1:500 - 1:2000
IHC-P	1:100 - 1:200

Not tested in other applications.

**Calculated MW** 23 kDa. ( [Note](#) )

## Properties

<b>Form</b>	Liquid
<b>Buffer</b>	PBS, 50% Glycerol
<b>Preservative</b>	0.02% Sodium azide
<b>Storage</b>	Store as concentrated solution. Centrifuge briefly prior to opening vial. For short-term storage (1-2 weeks), store at 4°C. For long-term storage, aliquot and store at -20°C or below. Avoid multiple freeze-thaw cycles.
<b>Concentration</b>	Batch dependent (Please refer to the vial label for the specific concentration.)
<b>Immunogen</b>	Recombinant protein of human CLDN3
<b>Purification</b>	Purified by affinity chromatography
<b>Conjugation</b>	Unconjugated

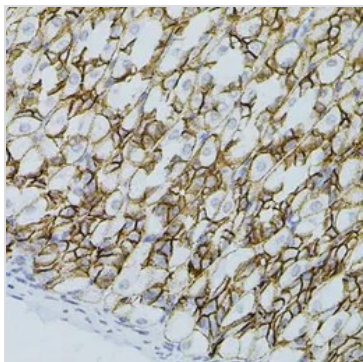
**Note**

For laboratory research use only. Not for any clinical, therapeutic, or diagnostic use in humans or animals. Not for animal or human consumption.

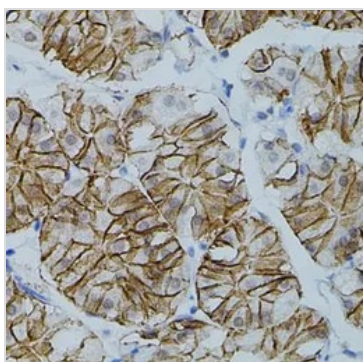
Purchasers shall not, and agree not to enable third parties to, analyze, copy, reverse engineer or otherwise attempt to determine the structure or sequence of the product.

For full product information, images and publications, please visit our [website](#).

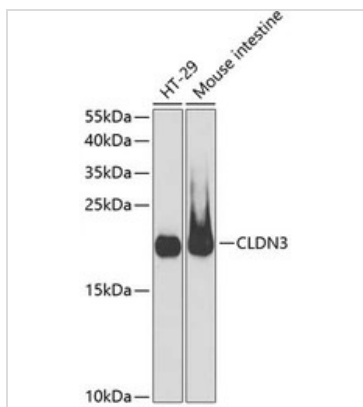
## DATA IMAGES

**GTX00665 IHC-P Image**

IHC-P analysis of mouse stomach tissue using GTX00665 Claudin 3 antibody.

**GTX00665 IHC-P Image**

IHC-P analysis of human stomach tissue using GTX00665 Claudin 3 antibody.

**GTX00665 WB Image**

WB analysis of various sample lysates using GTX00665 Claudin 3 antibody.

Dilution : 1:400

Loading : 25µg per lane



For full product information, images and publications, please visit our [website](https://www.genetex.com).