

PELP1 antibody [COD-16]

Cat. No. GTX00668

Host	Rabbit
Clonality	Monoclonal
Isotype	IgG
Applications	WB, IHC-P
Reactivity	Human, Mouse, Rat

Package
100 µg

Applications

Application Note

*Optimal dilutions/concentrations should be determined by the researcher.

Suggested dilution	Recommended dilution
WB	1:500-1:2000
IHC-P	1:50-1:200

Not tested in other applications.

Calculated MW 120 kDa. ([Note](#))

Properties

Form	Liquid
Buffer	PBS, 150mM NaCl, 50% Glycerol
Preservative	0.02% Sodium azide
Storage	Store as concentrated solution. Centrifuge briefly prior to opening vial. For short-term storage (1-2 weeks), store at 4°C. For long-term storage, aliquot and store at -20°C or below. Avoid multiple freeze-thaw cycles.
Concentration	0.5-1 mg/ml (Please refer to the vial label for the specific concentration.)
Immunogen	A synthesized peptide derived from human PELP1
Purification	Purified by affinity chromatography
Conjugation	Unconjugated

Note

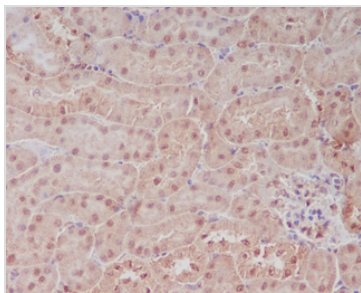
For laboratory research use only. Not for any clinical, therapeutic, or diagnostic use in humans or animals. Not for animal or human consumption.

Purchasers shall not, and agree not to enable third parties to, analyze, copy, reverse engineer or otherwise attempt to determine the structure or sequence of the product.



For full product information, images and publications, please visit our [website](#).

DATA IMAGES

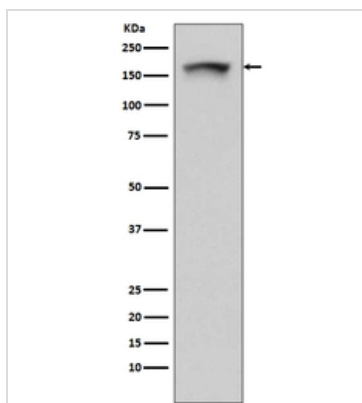


GTX00668 IHC-P Image

IHC-P analysis of mouse kidney tissue using GTX00668 PELP1 antibody [COD-16].

Antigen retrieval : Heat mediated antigen retrieval was performed in citrate buffer (pH6, epitope retrieval solution) for 20 mins

Dilution : 1 µg/mL



GTX00668 WB Image

WB analysis of 293T cell lysate using GTX00668 PELP1 antibody [COD-16].

Loading : 50µg



For full product information, images and publications, please visit our [website](https://www.genetex.com).