

ZEB2 antibody [OTI1E12]

Cat. No. GTX00672

Host	Mouse
Clonality	Monoclonal
Isotype	IgG1
Application	WB, IHC-P
Reactivity	Human

Package
100 µl

APPLICATION

Application Note

*Optimal dilutions/concentrations should be determined by the researcher.

Suggested dilution	Recommended dilution
WB	1:2000
IHC-P	1:150

Not tested in other applications.

Calculated MW 136 kDa. ([Note](#))

PROPERTIES

Form	Liquid
Buffer	PBS, 1% BSA, 50% Glycerol
Preservative	0.02% Sodium azide
Storage	Store as concentrated solution. Centrifuge briefly prior to opening vial. For short-term storage (1-2 weeks), store at 4°C. For long-term storage, aliquot and store at -20°C or below. Avoid multiple freeze-thaw cycles.
Concentration	1 mg/ml (Please refer to the vial label for the specific concentration.)
Immunogen	Human recombinant protein fragment corresponding to amino acids 1-350 of human ZEB2 (NP_055610) produced in E.coli.
Purification	Purified by affinity chromatography
Conjugation	Unconjugated

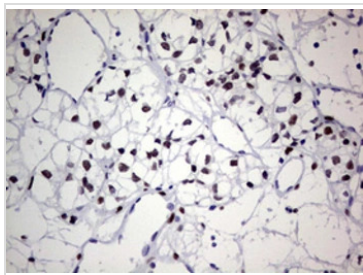
Note

For laboratory research use only. Not for any clinical, therapeutic, or diagnostic use in humans or animals. Not for animal or human consumption.

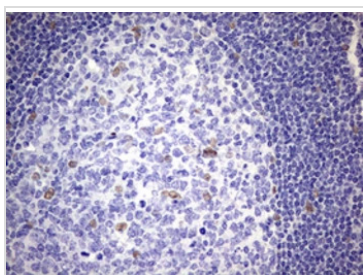
Purchasers shall not, and agree not to enable third parties to, analyze, copy, reverse engineer or otherwise attempt to determine the structure or sequence of the product.



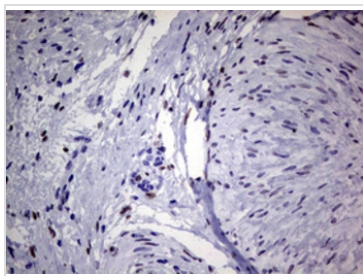
For full product information, images and publications, please visit our [website](#).

DATA IMAGES

GTX00672 IHC-P Image

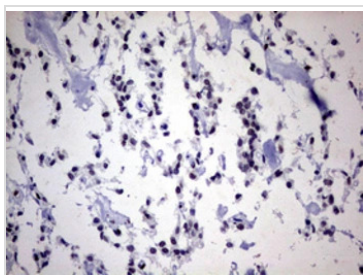
IHC-P analysis of human kidney carcinoma tissue using GTX00672 ZEB2 antibody [OTI1E12].
Antigen retrieval : Heat induced epitope retrieval by 10mM citric buffer, pH6.0, 120°C for 3min


GTX00672 IHC-P Image

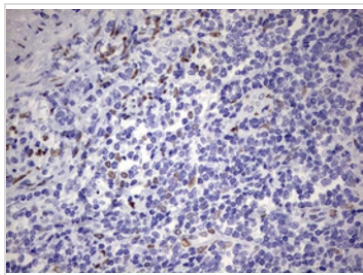
IHC-P analysis of human tonsil tissue using GTX00672 ZEB2 antibody [OTI1E12].
Antigen retrieval : Heat induced epitope retrieval by 10mM citric buffer, pH6.0, 120°C for 3min


GTX00672 IHC-P Image

IHC-P analysis of human ovary tissue using GTX00672 ZEB2 antibody [OTI1E12].
Antigen retrieval : Heat induced epitope retrieval by 10mM citric buffer, pH6.0, 120°C for 3min


GTX00672 IHC-P Image

IHC-P analysis of human pancreas carcinoma tissue using GTX00672 ZEB2 antibody [OTI1E12].
Antigen retrieval : Heat induced epitope retrieval by 10mM citric buffer, pH6.0, 120°C for 3min


GTX00672 IHC-P Image

IHC-P analysis of human lymphoma tissue using GTX00672 ZEB2 antibody [OTI1E12].
Antigen retrieval : Heat induced epitope retrieval by 10mM citric buffer, pH6.0, 120°C for 3min



For full product information, images and publications, please visit our [website](https://www.genetex.com).