

## PERK (phospho Ser555) antibody

**Cat. No. GTX00673**

<b>Host</b>	Rabbit
<b>Clonality</b>	Polyclonal
<b>Isotype</b>	IgG
<b>Applications</b>	WB, ELISA
<b>Reactivity</b>	Human

References ( 5 )

Package

100 µl

## Applications

**Application Note**

\*Optimal dilutions/concentrations should be determined by the researcher.

Suggested dilution	Recommended dilution
WB	1:500-1:2000
ELISA	Assay dependent

Not tested in other applications.

**Calculated MW** 125 kDa. ( [Note](#) )

## Properties

<b>Form</b>	Liquid
<b>Buffer</b>	PBS, 150mM NaCl, 50% Glycerol
<b>Preservative</b>	0.02% Sodium azide
<b>Storage</b>	Store as concentrated solution. Centrifuge briefly prior to opening vial. For short-term storage (1-2 weeks), store at 4°C. For long-term storage, aliquot and store at -20°C or below. Avoid multiple freeze-thaw cycles.
<b>Concentration</b>	1 mg/ml (Please refer to the vial label for the specific concentration.)
<b>Immunogen</b>	A synthesized peptide derived from human perk around the phosphorylation site of Ser555.
<b>Purification</b>	Purified by sequential chromatography on phospho-peptide and non-phospho-peptide columns
<b>Conjugation</b>	Unconjugated

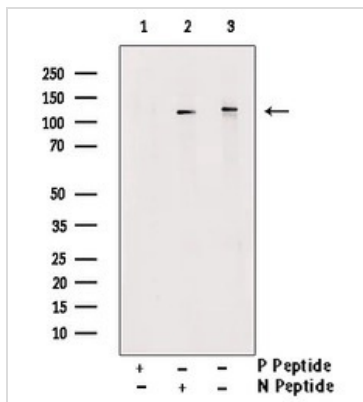
**Note**

For laboratory research use only. Not for any clinical, therapeutic, or diagnostic use in humans or animals. Not for animal or human consumption.

Purchasers shall not, and agree not to enable third parties to, analyze, copy, reverse engineer or otherwise attempt to determine the structure or sequence of the product.

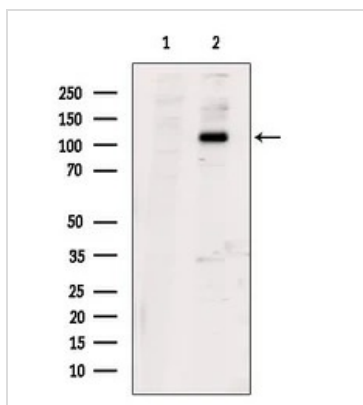
For full product information, images and publications, please visit our [website](#).

DATA IMAGES



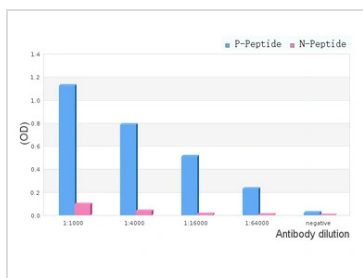
**GTX00673 WB Image**

WB analysis of HepG2 lysate using GTX00673 PERK (phospho Ser555) antibody preincubated with phospho- and non phospho- peptide.



**GTX00673 WB Image**

WB analysis of serum starvation treated EC304 cell lysates using GTX00673 PERK (phospho Ser555) antibody. The lane on the left was treated with blocking peptide.



**GTX00673 ELISA Image**

ELISA analysis of phospho- and non phospho- immunogen peptide using GTX00673 PERK (phospho Ser555) antibody.

P-peptide: phospho-peptide

N-peptide: non-phospho-peptide

Peptides concentration: 1µg/ml



For full product information, images and publications, please visit our [website](#).