

# MMP1 antibody

**Cat. No. GTX00674**

<b>Host</b>	Rabbit
<b>Clonality</b>	Polyclonal
<b>Isotype</b>	IgG
<b>Application</b>	WB, ICC/IF, IHC-P
<b>Reactivity</b>	Human, Mouse, Rat

Reference ( 3 )  
Package  
100 µl

## APPLICATION

### Application Note

\*Optimal dilutions/concentrations should be determined by the researcher.

Suggested dilution	Recommended dilution
WB	1:500 - 1:1000
ICC/IF	1:100 - 1:500
IHC-P	1:100 - 1:200

Not tested in other applications.

**Calculated MW** 54 kDa. ( [Note](#) )

## PROPERTIES

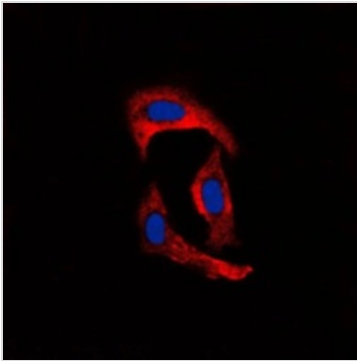
<b>Form</b>	Liquid
<b>Buffer</b>	0.42% Potassium Phosphate, 0.87% NaCl, 30% Glycerol
<b>Preservative</b>	0.01% Sodium azide
<b>Storage</b>	Store as concentrated solution. Centrifuge briefly prior to opening vial. For short-term storage (1-2 weeks), store at 4°C. For long-term storage, aliquot and store at -20°C or below. Avoid multiple freeze-thaw cycles.
<b>Concentration</b>	Batch dependent (Please refer to the vial label for the specific concentration.)
<b>Immunogen</b>	KLH-conjugated synthetic peptide encompassing a sequence within the C-term region of human MMP1. The exact sequence is proprietary.
<b>Purification</b>	Purified by antigen-affinity chromatography
<b>Conjugation</b>	Unconjugated

**Note** For laboratory research use only. Not for any clinical, therapeutic, or diagnostic use in humans or animals. Not for animal or human consumption.

Purchasers shall not, and agree not to enable third parties to, analyze, copy, reverse engineer or otherwise attempt to determine the structure or sequence of the product.



For full product information, images and publications, please visit our [website](#).

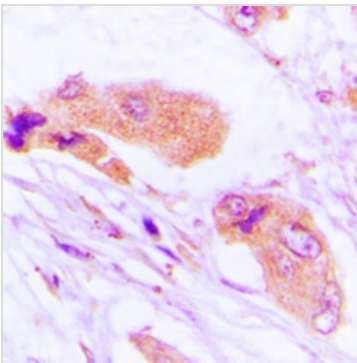
**DATA IMAGES**

**GTX00674 ICC/IF Image**

ICC/IF analysis of formalin-fixed MCF7 cells using GTX00674 MMP1 antibody.

Red : Primary antibody

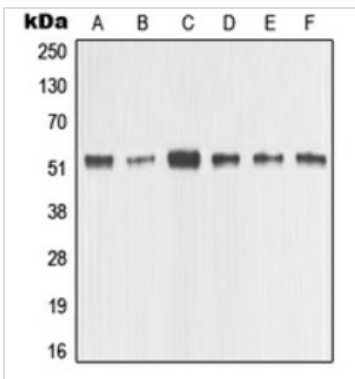
Blue : DAPI

Perrmeabilization : 0.1% Triton X-100 in TBS for 5-10 minutes


**GTX00674 IHC-P Image**

IHC-P analysis of human lung tissue cancer using GTX00674 MMP1 antibody.

Antigen retrieval : Heat mediated antigen retrieval with sodium citrate buffer (pH 6.0)


**GTX00674 WB Image**

WB analysis of various samples using GTX00674 MMP1 antibody.

A : HeLa whole cell lysate

B : MCF7 whole cell lysate

C : MDA-MB-435 whole cell lysate

D : Raw264.7 whole cell lysate

E : PC12 whole cell lysate

F : NIH3T3 whole cell lysate



For full product information, images and publications, please visit our [website](https://www.genetex.com).