

## p53 (phospho Ser315) antibody [#18]

**Cat. No. GTX00678**

<b>Host</b>	Mouse
<b>Clonality</b>	Monoclonal
<b>Isotype</b>	IgG2b
<b>Application</b>	WB, ICC/IF, IHC-P, ELISA
<b>Reactivity</b>	Human

Reference ( 1 )

Package

100 µg

### APPLICATION

#### Application Note

\*Optimal dilutions/concentrations should be determined by the researcher.

Suggested dilution	Recommended dilution
WB	1:1000-1:2000
ICC/IF	Assay dependent
IHC-P	Assay dependent
ELISA	Assay dependent

Not tested in other applications.

**Calculated MW** 44 kDa. ( [Note](#) )

### PROPERTIES

<b>Form</b>	Liquid
<b>Buffer</b>	PBS (pH7.4), 50% Glycerol
<b>Preservative</b>	No preservative
<b>Storage</b>	Store as concentrated solution. Centrifuge briefly prior to opening vial. For short-term storage (1-2 weeks), store at 4°C. For long-term storage, aliquot and store at -20°C or below. Avoid multiple freeze-thaw cycles.
<b>Concentration</b>	1 mg/ml (Please refer to the vial label for the specific concentration.)
<b>Immunogen</b>	Synthetic peptide containing phospho-Ser315 of p53
<b>Purification</b>	Purified IgG From tissue culture supernatant
<b>Conjugation</b>	Unconjugated



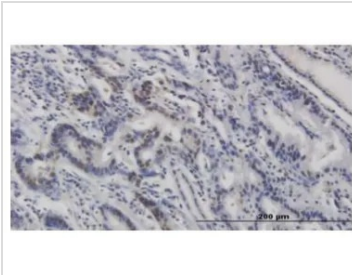
For full product information, images and publications, please visit our [website](#).

For laboratory research use only. Not for any clinical, therapeutic, or diagnostic use in humans or animals. Not for animal or human consumption.

## Note

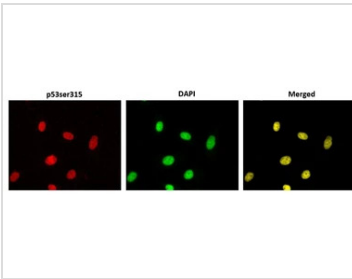
Purchasers shall not, and agree not to enable third parties to, analyze, copy, reverse engineer or otherwise attempt to determine the structure or sequence of the product.

## DATA IMAGES



### GTX00678 IHC-P Image

IHC-P analysis of Human stomach cancer tissue section using GTX00678 p53 (phospho Ser315) antibody [#18].



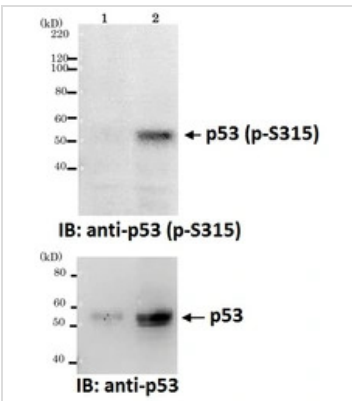
### GTX00678 ICC/IF Image

ICC/IF analysis of HeLa cells treated with 100 nM Doxorubicin for 24 hrs using GTX00678 p53 (phospho Ser315) antibody [#18].

Dilution : 1:1000 in 1% BSA in PBS, overnight, 4 degree C

Fixation : 4% PFA, overnight

Permeabilization : 0.25% Triton X-100 in PBS for 10 min



### GTX00678 WB Image

WB analysis of various samples using GTX00678 p53 (phospho Ser315) antibody [#18] (upper) or GTX70214 p53 antibody [DO1] (lower).

Lane 1 : untreated MCF cells

Lane 2 : MCF cells treated with nocodazole at 100 ng/ml for 48 hrs



For full product information, images and publications, please visit our [website](#).