

E2F1 (phospho Ser364) antibody [#2]

Cat. No. GTX00679

Host	Mouse
Clonality	Monoclonal
Isotype	IgG2b
Applications	WB, ELISA
Reactivity	Human

Package
100 µg

Applications

Application Note

*Optimal dilutions/concentrations should be determined by the researcher.

Suggested dilution	Recommended dilution
WB	~1 µg/ml
ELISA	Assay dependent

Not tested in other applications.

Calculated MW 47 kDa. ([Note](#))

Properties

Form	Liquid
Buffer	PBS, 50% Glycerol
Preservative	No preservatives
Storage	Store as concentrated solution. Centrifuge briefly prior to opening vial. For short-term storage (1-2 weeks), store at 4°C. For long-term storage, aliquot and store at -20°C or below. Avoid multiple freeze-thaw cycles.
Concentration	1 mg/ml (Please refer to the vial label for the specific concentration.)
Immunogen	A synthetic peptide corresponding to a sequence of human E2F1 protein including and surrounding phospho-Ser364
Purification	Purified IgG
Conjugation	Unconjugated

Note

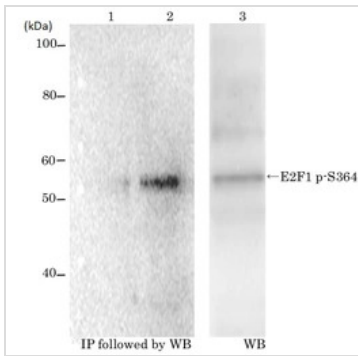
For laboratory research use only. Not for any clinical, therapeutic, or diagnostic use in humans or animals. Not for animal or human consumption.

Purchasers shall not, and agree not to enable third parties to, analyze, copy, reverse engineer or otherwise attempt to determine the structure or sequence of the product.



For full product information, images and publications, please visit our [website](#).

DATA IMAGES

**GTX00679 WB Image**

WB analysis of MCF7 untreated (lane 1) or treated with 10 μ M etoposide for 16 hrs (lane 2 and 3) using GTX00679 E2F1 (phospho Ser364) antibody [#2].

Lane 1 and 2 : IP with pantropic anti-E2F1 antibody followed by WB with GTX00679

Lane 3 : Cell lysate analyzed by WB with GTX00679



For full product information, images and publications, please visit our [website](#).