

## p53 (phospho Ser46) antibody [#36]

**Cat. No. GTX00680**

<b>Host</b>	Mouse
<b>Clonality</b>	Monoclonal
<b>Isotype</b>	IgG1
<b>Applications</b>	WB, IHC-P, ELISA
<b>Reactivity</b>	Human

References ( 3 )

Package

100 µg

## Applications

**Application Note**

\*Optimal dilutions/concentrations should be determined by the researcher.

Suggested dilution	Recommended dilution
WB	1:1000-1:2000
IHC-P	Assay dependent
ELISA	Assay dependent

Not tested in other applications.

**Calculated MW** 44 kDa. ( [Note](#) )

## Properties

<b>Form</b>	Liquid
<b>Buffer</b>	Filter-sterilized PBS, 50% Glycerol
<b>Preservative</b>	No preservatives
<b>Storage</b>	Store as concentrated solution. Centrifuge briefly prior to opening vial. For short-term storage (1-2 weeks), store at 4°C. For long-term storage, aliquot and store at -20°C or below. Avoid multiple freeze-thaw cycles.
<b>Concentration</b>	1 mg/ml (Please refer to the vial label for the specific concentration.)
<b>Immunogen</b>	Synthetic peptide containing phospho-Ser46 of p53
<b>Purification</b>	Purified IgG From tissue culture supernatant
<b>Conjugation</b>	Unconjugated

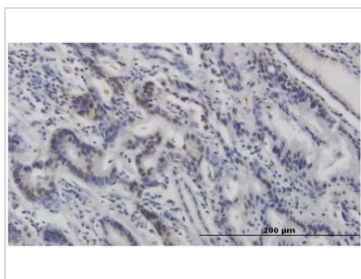
**Note**

For laboratory research use only. Not for any clinical, therapeutic, or diagnostic use in humans or animals. Not for animal or human consumption.

Purchasers shall not, and agree not to enable third parties to, analyze, copy, reverse engineer or otherwise attempt to determine the structure or sequence of the product.

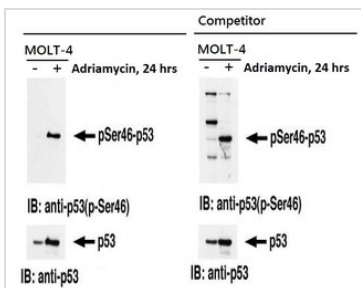
For full product information, images and publications, please visit our [website](#).

DATA IMAGES



**GTX00680 IHC-P Image**

IHC-P analysis of Human stomach cancer tissue section using GTX00680 p53 (phospho Ser46) antibody [#36].



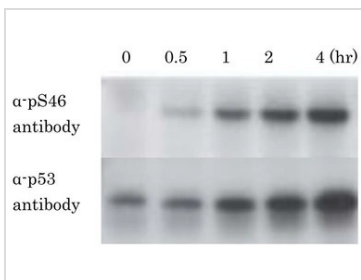
**GTX00680 WB Image**

WB analysis of MOLT-4 cells treated with/without adriamycin for 24 hrs using GTX00680 p53 (phospho Ser46) antibody [#36].

Left : GTX00680

Right : the competitor's p53 phospho-Ser46 antibody

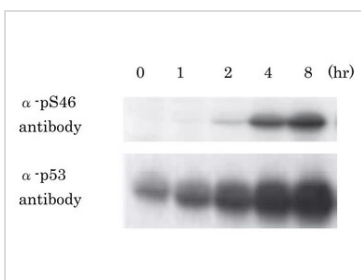
\*The competitor is not affiliated with GeneTex and does not endorse this product.



**GTX00680 WB Image**

WB analysis of various samples using GTX00680 p53 (phospho Ser46) antibody [#36] (upper panel) or anti-p53 antibody (lower panel).

Samples : U2OS cells were irradiated by X-ray (10 Gy) for 0, 0.5, 1, 2, and 4 hrs



**GTX00680 WB Image**

WB analysis of various samples using GTX00680 p53 (phospho Ser46) antibody [#36] (upper panel) or anti-p53 antibody (lower panel).

Samples : MCF-7 cells were irradiated by UV (20 J/m2) for 0, 1, 2, 4, and 8 hrs



For full product information, images and publications, please visit our [website](#).