

## p53 (phospho Ser20) antibody [17B6]

**Cat. No. GTX00681**

|                     |            |
|---------------------|------------|
| <b>Host</b>         | Mouse      |
| <b>Clonality</b>    | Monoclonal |
| <b>Isotype</b>      | IgG1       |
| <b>Applications</b> | WB, ELISA  |
| <b>Reactivity</b>   | Human      |

**Package**  
100 µg

## Applications

**Application Note**

\*Optimal dilutions/concentrations should be determined by the researcher.

| Suggested dilution | Recommended dilution |
|--------------------|----------------------|
| WB                 | ~1 µg/ml             |
| ELISA              | Assay dependent      |

Not tested in other applications.

**Calculated MW** 44 kDa. ([Note](#))

## Properties

|                      |  |
|----------------------|--|
| <b>Form</b>          | Liquid   |
| <b>Buffer</b>        | Filter-sterilized PBS, 50% Glycerol  |
| <b>Preservative</b>  | No preservatives   |
| <b>Storage</b>       | Store as concentrated solution. Centrifuge briefly prior to opening vial. For short-term storage (1-2 weeks), store at 4°C. For long-term storage, aliquot and store at -20°C or below. Avoid multiple freeze-thaw cycles. |
| <b>Concentration</b> | 1 mg/ml (Please refer to the vial label for the specific concentration.)   |
| <b>Immunogen</b>     | synthetic peptide containing phospho-Ser20   |
| <b>Purification</b>  | Purified IgG   |
| <b>Conjugation</b>   | Unconjugated   |

**Note**

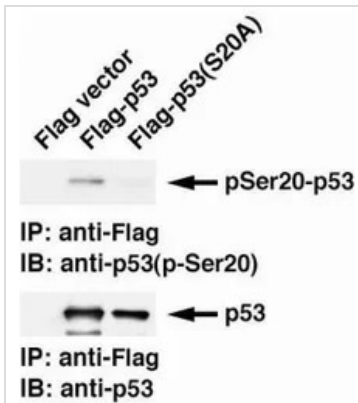
For laboratory research use only. Not for any clinical, therapeutic, or diagnostic use in humans or animals. Not for animal or human consumption.

Purchasers shall not, and agree not to enable third parties to, analyze, copy, reverse engineer or otherwise attempt to determine the structure or sequence of the product.



For full product information, images and publications, please visit our [website](#).

## DATA IMAGES

**GTX00681 WB Image**

WB analysis of various samples using GTX00681 p53 (phospho Ser20) antibody [17B6] (upper panel) or anti-p53 antibody (lower panel). All samples were immunoprecipitated with anti-Flag antibody and then analyzed by Western blot.

Left : H1299 cells transfected with Flag vector

Middle : H1299 cells transfected with Flag-p53 (wild-type)

Right : H1299 cells transfected with Flag-p53 mutant (Ser20Ala).



For full product information, images and publications, please visit our [website](#).