

# Rb (phospho Thr821) antibody [24A7]

**Cat. No. GTX00682**

<b>Host</b>	Mouse
<b>Clonality</b>	Monoclonal
<b>Isotype</b>	IgG1
<b>Applications</b>	WB, ELISA
<b>Reactivity</b>	Human

**Package**  
100 µg

## Applications

### Application Note

\*Optimal dilutions/concentrations should be determined by the researcher.

Suggested dilution	Recommended dilution
WB	~1 µg/ml
ELISA	Assay dependent

Not tested in other applications.

**Calculated MW** 106 kDa. ([Note](#))

## Properties

<b>Form</b>	Liquid
<b>Buffer</b>	Filter-sterilized PBS, 50% Glycerol
<b>Preservative</b>	No preservatives
<b>Storage</b>	Store as concentrated solution. Centrifuge briefly prior to opening vial. For short-term storage (1-2 weeks), store at 4°C. For long-term storage, aliquot and store at -20°C or below. Avoid multiple freeze-thaw cycles.
<b>Concentration</b>	1 mg/ml (Please refer to the vial label for the specific concentration.)
<b>Immunogen</b>	A synthetic peptide containing phospho-Thr821 of human Rb
<b>Purification</b>	Purified IgG
<b>Conjugation</b>	Unconjugated

### Note

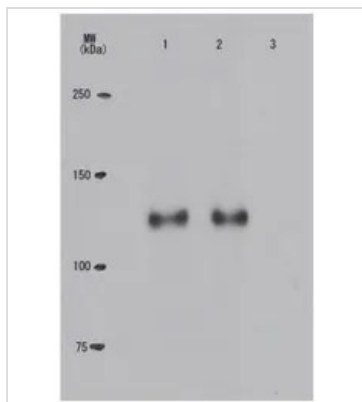
For laboratory research use only. Not for any clinical, therapeutic, or diagnostic use in humans or animals. Not for animal or human consumption.

Purchasers shall not, and agree not to enable third parties to, analyze, copy, reverse engineer or otherwise attempt to determine the structure or sequence of the product.



For full product information, images and publications, please visit our [website](#).

## DATA IMAGES



### GTX00682 WB Image

WB analysis of various samples using GTX00682 Rb (phospho Thr821) antibody [24A7]. The cell extract were immuno-precipitated with anti-Myc antibody and then analyzed by Western Blot with GTX00682 Rb (phospho Thr821) antibody [24A7].

Lane 1 : H1299 overexpressing Myc-tagged wild-type Rb

Lane 2 : H1299 overexpressing Myc-tagged Rb (S795A)

Lane 3 : H1299 overexpressing Myc-tagged Rb (T821A).



For full product information, images and publications, please visit our [website](https://www.genetex.com).