

Rb (phospho Ser795) antibody [28B5]

Cat. No. GTX00683

Host	Mouse
Clonality	Monoclonal
Isotype	IgG2a
Application	WB, ELISA
Reactivity	Human

Package
100 µg

APPLICATION

Application Note

*Optimal dilutions/concentrations should be determined by the researcher.

Suggested dilution	Recommended dilution
WB	~1 µg/ml
ELISA	Assay dependent

Not tested in other applications.

Calculated MW 106 kDa. ([Note](#))

PROPERTIES

Form	Liquid
Buffer	Filter-sterilized PBS, 50% Glycerol
Preservative	No preservative
Storage	Store as concentrated solution. Centrifuge briefly prior to opening vial. For short-term storage (1-2 weeks), store at 4°C. For long-term storage, aliquot and store at -20°C or below. Avoid multiple freeze-thaw cycles.
Concentration	1 mg/ml (Please refer to the vial label for the specific concentration.)
Immunogen	A synthetic peptide containing phospho-Ser795 of human Rb
Purification	Purified IgG
Conjugation	Unconjugated

Note

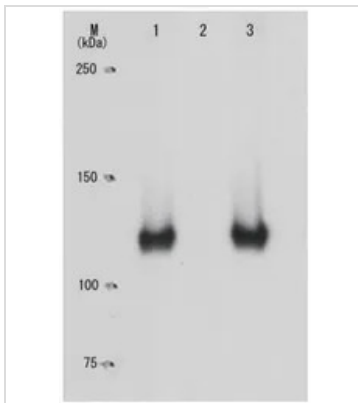
For laboratory research use only. Not for any clinical, therapeutic, or diagnostic use in humans or animals. Not for animal or human consumption.

Purchasers shall not, and agree not to enable third parties to, analyze, copy, reverse engineer or otherwise attempt to determine the structure or sequence of the product.



For full product information, images and publications, please visit our [website](#).

DATA IMAGES



GTX00683 WB Image

WB analysis of various samples using GTX00683 Rb (phospho Ser795) antibody [28B5]. The cell extract were immuno-precipitated with anti-Myc antibody and then analyzed by Western Blot with GTX00683 Rb (phospho Ser795) antibody [28B5].

Lane 1 : H1299 overexpressing Myc-tagged wild-type Rb

Lane 2 : H1299 overexpressing Myc-tagged Rb (S795A)

Lane 3 : H1299 overexpressing Myc-tagged Rb (T821A).



For full product information, images and publications, please visit our [website](https://www.genetex.com).