

## c-Myc (phospho Ser62) antibody [33A12E10]

**Cat. No. GTX00684**

<b>Host</b>	Mouse
<b>Clonality</b>	Monoclonal
<b>Isotype</b>	IgG2b
<b>Applications</b>	WB, ICC/IF, IHC-P, FCM, IP, ELISA
<b>Reactivity</b>	Human, Mouse

References ( 5 )

Package

100 µg

## Applications

**Application Note**

\*Optimal dilutions/concentrations should be determined by the researcher.

Suggested dilution	Recommended dilution
WB	~1 µg/ml
ICC/IF	0.5-1 µg/ml
IHC-P	5 µg/ml
FCM	using 1 µg for 10 <sup>6</sup> cells.
IP	Assay dependent
ELISA	Assay dependent

**Note : Recommed using a heat mediated antigen retrieval with citrate buffer (pH 6.0).**

Not tested in other applications.

**Calculated MW** 49 kDa. ( [Note](#) )

## Properties

<b>Form</b>	Liquid
<b>Buffer</b>	PBS, 50% Glycerol
<b>Preservative</b>	No preservative
<b>Storage</b>	Store as concentrated solution. Centrifuge briefly prior to opening vial. For short-term storage (1-2 weeks), store at 4°C. For long-term storage, aliquot and store at -20°C or below. Avoid multiple freeze-thaw cycles.
<b>Concentration</b>	1 mg/ml (Please refer to the vial label for the specific concentration.)
<b>Immunogen</b>	Synthetic peptide containing phospho-Ser62 of cMyc
<b>Purification</b>	Purified IgG
<b>Conjugation</b>	Unconjugated

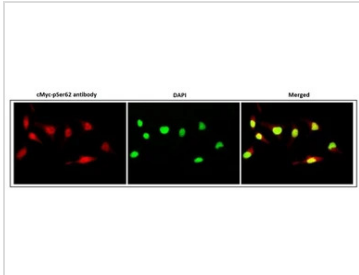


For full product information, images and publications, please visit our [website](#).

For laboratory research use only. Not for any clinical, therapeutic, or diagnostic use in humans or animals. Not for animal or human consumption.

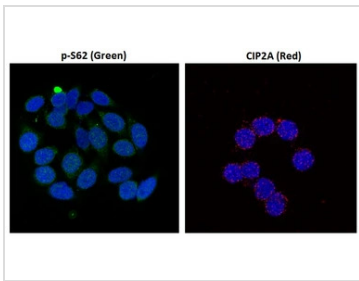
**Note**  
 Purchasers shall not, and agree not to enable third parties to, analyze, copy, reverse engineer or otherwise attempt to determine the structure or sequence of the product.

DATA IMAGES



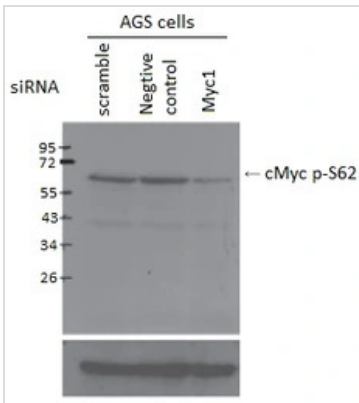
**GTX00684 ICC/IF Image**

ICC/IF analysis of HeLa cells using GTX00684 c-Myc (phospho Ser62) antibody [33A12E10].  
 Dilution : 1:2000 in 1% BSA in PBS at 4 degree C, overnight  
 Fixation : 4% PFA, overnight  
 Permeabilization : 0.25% Triton X-100 in PBS for 10 min



**GTX00684 ICC/IF Image**

ICC/IF analysis of HeLa cells using GTX00684 c-Myc (phospho Ser62) antibody [33A12E10] (Green, Left) or proximity Ligation Analysis with anti-c-Myc pS62 and CIP2A antibodies, association of c-Myc pS62 with CIP2A (Right, red) in nuclei (DAPI, blue).



**GTX00684 WB Image**

WB analysis of various samples using GTX00684 c-Myc (phospho Ser62) antibody [33A12E10].  
 Scrambled siRNA : AGS cells transfected with scrambled siRNA  
 Negative control siRNA : AGS cells transfected with negative control siRNA  
 Myc1 : AGS cells transfected with c-Myc siRNA



For full product information, images and publications, please visit our [website](#).