

ATF6 antibody [1-7]

Cat. No. GTX00687

Host	Mouse
Clonality	Monoclonal
Isotype	IgG2a
Applications	WB, ICC/IF, IP
Reactivity	Human

References (2)

Package

50 µg

Applications

Application Note

*Optimal dilutions/concentrations should be determined by the researcher.

Suggested dilution	Recommended dilution
WB	1:500-1:1000
ICC/IF	1:100-1:500
IP	1:100-1:500

Not tested in other applications.

Calculated MW 75 kDa. ([Note](#))

Product Note This antibody detects both full-length ATF6 alpha as well as the cleaved ATF6 alpha p50 form. We do not recommend use of this product for Mouse samples.

Properties

Form	Liquid
Buffer	Filter-sterilized PBS, 50% Glycerol
Preservative	No preservatives
Storage	Store as concentrated solution. Centrifuge briefly prior to opening vial. For short-term storage (1-2 weeks), store at 4°C. For long-term storage, aliquot and store at -20°C or below. Avoid multiple freeze-thaw cycles.
Concentration	1 mg/ml (Please refer to the vial label for the specific concentration.)
Immunogen	Recombinant human ATF6 alpha; (His-tagged amino-terminal fragment of ATF6 alpha)
Purification	Purified IgG
Conjugation	Unconjugated



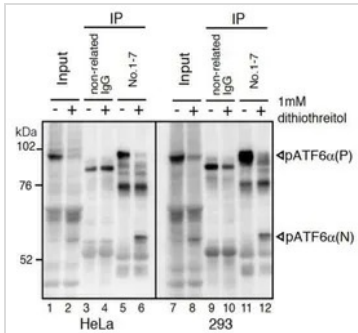
For full product information, images and publications, please visit our [website](#).

For laboratory research use only. Not for any clinical, therapeutic, or diagnostic use in humans or animals. Not for animal or human consumption.

Note

Purchasers shall not, and agree not to enable third parties to, analyze, copy, reverse engineer or otherwise attempt to determine the structure or sequence of the product.

DATA IMAGES



GTx00687 IP Image

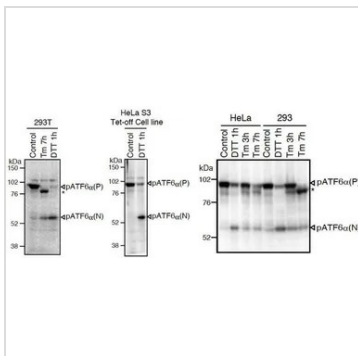
IP analysis of HeLa or 293 cell lysates using GTx00687 ATF6 antibody [1-7]. It is recommended using a light chain specific anti-mouse IgG antibody as a secondary antibody.

Lane 1, 2, 7, and 8 : Input

Lanes 3, 4, 9, and 10 : Non-related IgG as IP antibody

Lanes 5, 6, 11, and 12 : GTx00687 as IP antibody

IB antibody: GTx00687 ATF6 antibody [1-7]



GTx00687 WB Image

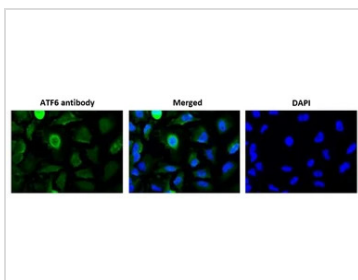
WB analysis of various samples using GTx00687 ATF6 antibody [1-7]. The asterisk denotes an unglycosylated form of pATF6α(P). ATF6α is constitutively expressed as pATF6α(P), and converted to pATF6α(N) (> 50-kDa protein) in ER-stressed cells.

pATF6α(P) : the endogenous precursor ATF6 alpha (~90kDa)

pATF6α(N) : the cleaved product of ATF6 alpha (>50kDa)

Tm: cells treated with 2 µg/ml tunicamycin (inhibitor of N-glycosylation) < br > DTT: cells treated with 1mM dithiothreitol (reducing reagent).

Loading : 50µg



GTx00687 ICC/IF Image

ICC/IF analysis of HeLa cells using GTx00687 ATF6 antibody [1-7].

Green : Primary antibody

Blue : DAPI

Dilution : 1:100



For full product information, images and publications, please visit our [website](https://www.genetex.com).