

## GFP antibody [1A5]

Cat. No. GTX00694

|              |                                   |
|--------------|-----------------------------------|
| Host         | Rat                               |
| Clonality    | Monoclonal                        |
| Isotype      | IgG1                              |
| Applications | WB, ICC/IF, IP, ELISA, ChIP assay |
| Reactivity   | Species independent               |

References ( 2 )

Package

100 µg

## Applications

## Application Note

\*Optimal dilutions/concentrations should be determined by the researcher.

| Suggested dilution | Recommended dilution |
|--------------------|----------------------|
| WB                 | ~1 µg/ml             |
| ICC/IF             | Assay dependent      |
| IP                 | Assay dependent      |
| ELISA              | Assay dependent      |
| ChIP assay         | Assay dependent      |

Not tested in other applications.

## Properties

|               |  |
|---------------|--|
| Form          | Liquid   |
| Buffer        | Filter-sterilized PBS, 50% Glycerol  |
| Preservative  | No preservatives   |
| Storage       | Store as concentrated solution. Centrifuge briefly prior to opening vial. For short-term storage (1-2 weeks), store at 4°C. For long-term storage, aliquot and store at -20°C or below. Avoid multiple freeze-thaw cycles. |
| Concentration | 1 mg/ml (Please refer to the vial label for the specific concentration.)   |
| Immunogen     | Recombinant GFP protein  |
| Purification  | Purified IgG   |
| Conjugation   | Unconjugated   |

## Note

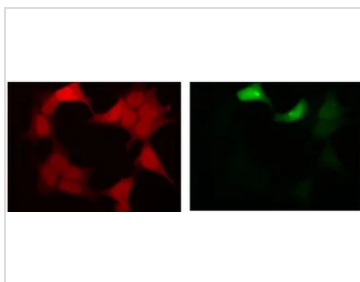
For laboratory research use only. Not for any clinical, therapeutic, or diagnostic use in humans or animals. Not for animal or human consumption.

Purchasers shall not, and agree not to enable third parties to, analyze, copy, reverse engineer or otherwise attempt to determine the structure or sequence of the product.



For full product information, images and publications, please visit our [website](#).

## DATA IMAGES



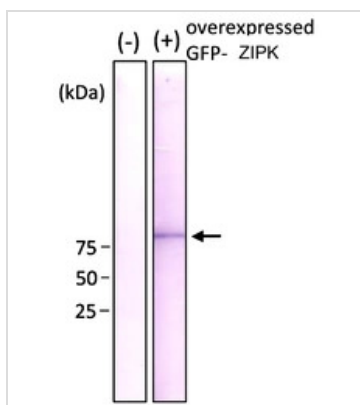
### GTX00694 ICC/IF Image

ICC/IF analysis of COS1 cell lysate overexpressed GFP and GST tagged ZIPK fusion protein using GTX00694 GFP antibody [1A5].

Note that fluorescence by the immunofluorescent staining using 1A5 antibody is much stronger than fluorescence of GFP.

Red : Primary antibody

Green : Fluorescence of GFP

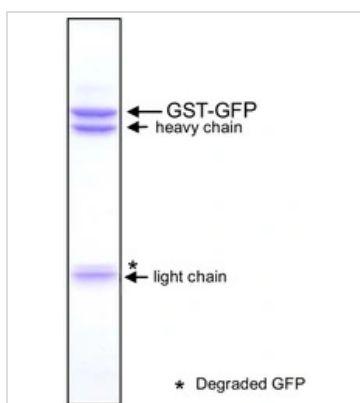


### GTX00694 WB Image

WB analysis of various samples using GTX00694 GFP antibody [1A5].

(-) : HEK293T cell lysate

(+) : HEK293T cell lysate overexpressed GFP-ZIPK protein



### GTX00694 IP Image

IP analysis of GST-GFP fusion protein using GTX00694 GFP antibody [1A5].



For full product information, images and publications, please visit our [website](https://www.genetex.com).