

## NUP98 antibody [21A10]

Cat. No. GTX00695

Host	Mouse
Clonality	Monoclonal
Isotype	IgG1
Application	WB, ICC/IF
Reactivity	Human, Mouse, Saccharomyces cerevisiae, Schizosaccharomyces pombe, Tetrahymena

Reference ( 1 )

Package

100 µg

## APPLICATION

## Application Note

\*Optimal dilutions/concentrations should be determined by the researcher.

Suggested dilution	Recommended dilution
WB	Assay dependent
ICC/IF	Assay dependent

Not tested in other applications.

Calculated MW 198 kDa. ( [Note](#) )

**Product Note** For WB application, it works on S. cerevisiae and S. pombe but may not be suitable for human, T. etrahymena and yeasts. Recommend GTX00693 NUP98 antibody [13C2] on human, T. etrahymena and yeasts samples.

## PROPERTIES

Form	Liquid
Buffer	Filter-sterilized PBS, 50% Glycerol
Preservative	No preservative
Storage	Store as concentrated solution. Centrifuge briefly prior to opening vial. For short-term storage (1-2 weeks), store at 4°C. For long-term storage, aliquot and store at -20°C or below. Avoid multiple freeze-thaw cycles.
Concentration	1 mg/ml (Please refer to the vial label for the specific concentration.)
Immunogen	Synthetic peptides containing conserved N-terminal sequence, GLFG, of Nup98 protein of Tetrahymena thermophila. Peptide 1; 1-MFGNTGGGGLFGNTQTQQTGGGLFGQPQQ-29 Peptide 2; 646-SNPTQGGGLFGAANPGLGG-664 Epitope determined: GLF
Purification	Purified IgG
Conjugation	Unconjugated



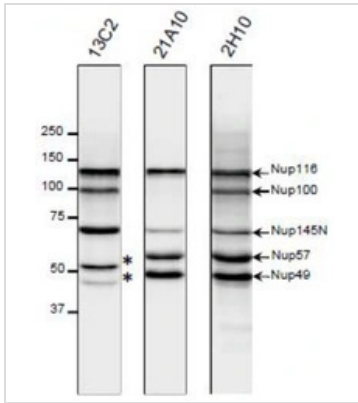
For full product information, images and publications, please visit our [website](#).

For laboratory research use only. Not for any clinical, therapeutic, or diagnostic use in humans or animals. Not for animal or human consumption.

#### Note

Purchasers shall not, and agree not to enable third parties to, analyze, copy, reverse engineer or otherwise attempt to determine the structure or sequence of the product.

#### DATA IMAGES



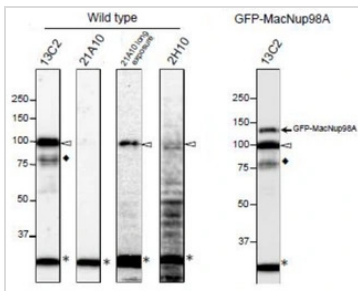
#### GTx00695 WB Image

WB analysis of *S. cerevisiae* cell extracts using GTx00693 NUP98 antibody [13C2], GTx00695 NUP98 antibody [21A10], or GTx00697 NUP98 antibody [2H10].

Dilution :

13C2 or 21A10 : 1:10

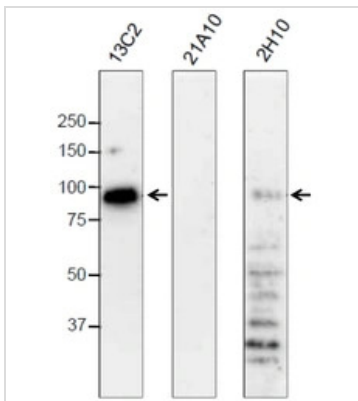
2H10 : 20 µg/ml



#### GTx00695 WB Image

WB analysis of *Tetrahymena themophila* cells or *Tetrahymena themophila* cells overexpressing GFP-MacNup98A using GTx00693 NUP98 antibody [13C2], GTx00695 NUP98 antibody [21A10], or GTx00697 NUP98 antibody [2H10].

Diamonds and asterisks represent uncharacterized proteins.



#### GTx00695 WB Image

WB analysis of HeLa whole cell lysate using GTx00693 NUP98 antibody [13C2], GTx00695 NUP98 antibody [21A10], or GTx00697 NUP98 antibody [2H10].

Dilution : 0.4 µg/ml



For full product information, images and publications, please visit our [website](https://www.genetex.com).