

NUP98 antibody [21A10]

Cat. No. GTX00695

Host	Mouse
Clonality	Monoclonal
Isotype	IgG1
Applications	WB, ICC/IF
Reactivity	Human, Mouse, Saccharomyces cerevisiae, Schizosaccharomyces pombe, Tetrahymena

References (1)

Package

100 µg

Applications

Application Note

*Optimal dilutions/concentrations should be determined by the researcher.

Suggested dilution	Recommended dilution
WB	Assay dependent
ICC/IF	Assay dependent

Not tested in other applications.

Calculated MW 198 kDa. ([Note](#))

Product Note For WB application, it works on S. cerevisiae and S. pombe but may not be suitable for human, T. etrahymena and yeasts. Recommend GTX00693 NUP98 antibody [13C2] on human, T. etrahymena and yeasts samples.

Properties

Form	Liquid
Buffer	Filter-sterilized PBS, 50% Glycerol
Preservative	No preservative
Storage	Store as concentrated solution. Centrifuge briefly prior to opening vial. For short-term storage (1-2 weeks), store at 4°C. For long-term storage, aliquot and store at -20°C or below. Avoid multiple freeze-thaw cycles.
Concentration	1 mg/ml (Please refer to the vial label for the specific concentration.)
Immunogen	Synthetic peptides containing conserved N-terminal sequence, GLFG, of Nup98 protein of Tetrahymena thermophila. Peptide 1; 1-MFGNTGGGGLFGNTQTQQTGGGLFGQPQQ-29 Peptide 2; 646-SNPTQGGGLFGAANPGLGG-664 Epitope determined: GLF
Purification	Purified IgG
Conjugation	Unconjugated



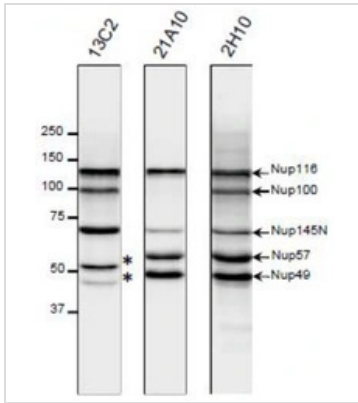
For full product information, images and publications, please visit our [website](#).

For laboratory research use only. Not for any clinical, therapeutic, or diagnostic use in humans or animals. Not for animal or human consumption.

Note

Purchasers shall not, and agree not to enable third parties to, analyze, copy, reverse engineer or otherwise attempt to determine the structure or sequence of the product.

DATA IMAGES



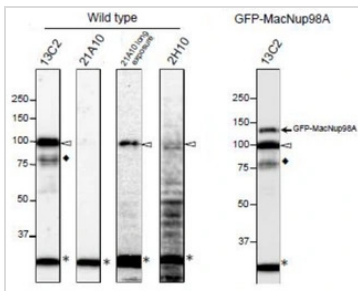
GTx00695 WB Image

WB analysis of *S. cerevisiae* cell extracts using GTX00693 NUP98 antibody [13C2], GTX00695 NUP98 antibody [21A10], or GTX00697 NUP98 antibody [2H10].

Dilution :

13C2 or 21A10 : 1:10

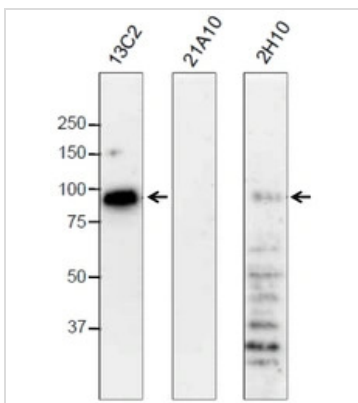
2H10 : 20 µg/ml



GTx00695 WB Image

WB analysis of *Tetrahymena themophila* cells or *Tetrahymena themophila* cells overexpressing GFP-MacNup98A using GTX00693 NUP98 antibody [13C2], GTX00695 NUP98 antibody [21A10], or GTX00697 NUP98 antibody [2H10].

Diamonds and asterisks represent uncharacterized proteins.



GTx00695 WB Image

WB analysis of HeLa whole cell lysate using GTX00693 NUP98 antibody [13C2], GTX00695 NUP98 antibody [21A10], or GTX00697 NUP98 antibody [2H10].

Dilution : 0.4 µg/ml



For full product information, images and publications, please visit our [website](https://www.genetex.com).