

Nucleoporin p62 antibody [2A11]

Cat. No. GTX00696

| | |
|---------------------|-----------------------|
| Host | Rat |
| Clonality | Monoclonal |
| Isotype | IgG1 |
| Applications | WB, ICC/IF, IP, ELISA |
| Reactivity | Human, Monkey |

References (2)

Package

200 µg

Applications

Application Note

*Optimal dilutions/concentrations should be determined by the researcher.

| Suggested dilution | Recommended dilution |
|--------------------|----------------------|
| WB | 1:500-1:2000 |
| ICC/IF | 1:400 |
| IP | Assay dependent |
| ELISA | Assay dependent |

Not tested in other applications.

Calculated MW 53 kDa. ([Note](#))

Properties

| | |
|----------------------|--|
| Form | Liquid |
| Buffer | Filter-sterilized PBS, 50% Glycerol |
| Preservative | No preservatives |
| Storage | Store as concentrated solution. Centrifuge briefly prior to opening vial. For short-term storage (1-2 weeks), store at 4°C. For long-term storage, aliquot and store at -20°C or below. Avoid multiple freeze-thaw cycles. |
| Concentration | 1 mg/ml (Please refer to the vial label for the specific concentration.) |
| Immunogen | Recombinant human Nup62 (aa 1-300) (GST-Nup62-His). Epitope: 1-179 amino acids(FG-repeat region) |
| Purification | Purified IgG From tissue culture supernatant |
| Conjugation | Unconjugated |



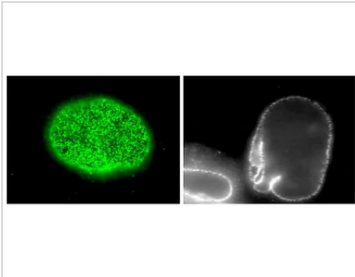
For full product information, images and publications, please visit our [website](#).

For laboratory research use only. Not for any clinical, therapeutic, or diagnostic use in humans or animals. Not for animal or human consumption.

Note

Purchasers shall not, and agree not to enable third parties to, analyze, copy, reverse engineer or otherwise attempt to determine the structure or sequence of the product.

DATA IMAGES



GTx00696 ICC/IF Image

ICC/IF analysis of HeLa cells using GTx00696 Nucleoporin p62 antibody [2A11].

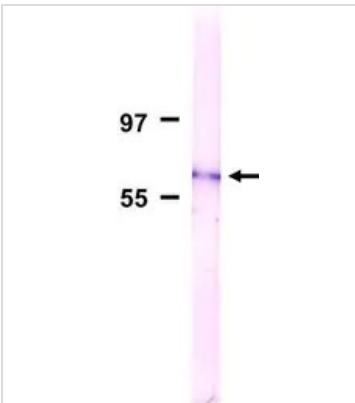
Left : Nup62 protein focused on nuclear surface

Right : Nup62 protein focused on nuclear rim

Dilution : 1:400

Fixation : 4% PFA

Permeabilization : 0.5% Triton X-100



GTx00696 WB Image

WB analysis of HeLa nuclear membrane extract using GTx00696 Nucleoporin p62 antibody [2A11].

Dilution : 1:500



For full product information, images and publications, please visit our [website](https://www.genetex.com).