

KPNA4 antibody [3D10]

Cat. No. GTX00698

Host	Rat
Clonality	Monoclonal
Isotype	IgG2a
Applications	WB, ELISA
Reactivity	Human, Mouse, Rat, Bovine, Dog, Hamster, Monkey, Simian

References (2)

Package

200 µg

Applications

Application Note

*Optimal dilutions/concentrations should be determined by the researcher.

Suggested dilution	Recommended dilution
WB	1:250-1:500
ELISA	Assay dependent

Not tested in other applications.

Calculated MW 58 kDa. ([Note](#))**Product Note** This antibody does not recognize other importin alpha family including alpha 4.

Properties

Form	Liquid
Buffer	Filter-sterilized PBS, 50% Glycerol
Preservative	No preservatives
Storage	Store as concentrated solution. Centrifuge briefly prior to opening vial. For short-term storage (1-2 weeks), store at 4°C. For long-term storage, aliquot and store at -20°C or below. Avoid multiple freeze-thaw cycles.
Concentration	1 mg/ml (Please refer to the vial label for the specific concentration.)
Immunogen	Recombinant mouse importin alpha 3 /KPNA4/ Qip 1 (full length)
Purification	Purified IgG
Conjugation	Unconjugated

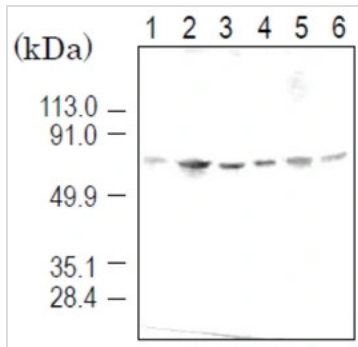
Note

For laboratory research use only. Not for any clinical, therapeutic, or diagnostic use in humans or animals. Not for animal or human consumption.

Purchasers shall not, and agree not to enable third parties to, analyze, copy, reverse engineer or otherwise attempt to determine the structure or sequence of the product.

For full product information, images and publications, please visit our [website](#).

DATA IMAGES

**GTX00698 WB Image**

WB analysis of various samples using GTX00698 KPNA4 antibody [3D10].

Lane 1 : HeLa whole cell lysate

Lane 2 : COS7 whole cell lysate

Lane 3 : L929 whole cell lysate

Lane 4 : NRK whole cell lysate

Lane 5 : BHK whole cell lysate

Lane 6 : MDBK whole cell lysate



For full product information, images and publications, please visit our [website](#).