

# XPA antibody [5F12]

**Cat. No. GTX00704**

<b>Host</b>	Mouse
<b>Clonality</b>	Monoclonal
<b>Isotype</b>	IgG2b
<b>Application</b>	WB, ICC/IF, ELISA, Neutralizing/Inhibition
<b>Reactivity</b>	Human

Reference ( 1 )  
 Package  
 100 µg

## APPLICATION

### Application Note

\*Optimal dilutions/concentrations should be determined by the researcher.

Suggested dilution	Recommended dilution
WB	1:1000-1:10000
ICC/IF	1:100-1:1000
ELISA	Assay dependent
Neutralizing/Inhibition	Assay dependent

**Note : It shows the inhibition of in vitro excision repair reaction and inhibition of XPA interaction with ERCC1 and TFIIH.**

Not tested in other applications.

**Calculated MW** 31 kDa. ( [Note](#) )

## PROPERTIES

<b>Form</b>	Liquid
<b>Buffer</b>	Filter-sterilized PBS, 50% Glycerol
<b>Preservative</b>	No preservative
<b>Storage</b>	Store as concentrated solution. Centrifuge briefly prior to opening vial. For short-term storage (1-2 weeks), store at 4°C. For long-term storage, aliquot and store at -20°C or below. Avoid multiple freeze-thaw cycles.
<b>Concentration</b>	1 mg/ml (Please refer to the vial label for the specific concentration.)
<b>Immunogen</b>	Recombinant full-length human XPA protein. Epipte: 30-47 amino acids
<b>Purification</b>	Purified IgG
<b>Conjugation</b>	Unconjugated

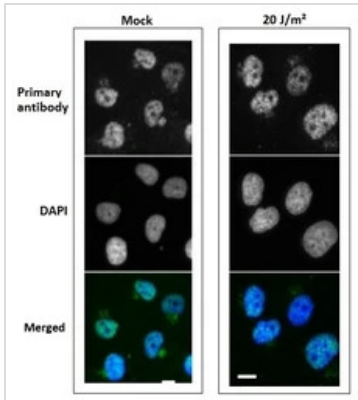


For full product information, images and publications, please visit our [website](#).

For laboratory research use only. Not for any clinical, therapeutic, or diagnostic use in humans or animals. Not for animal or human consumption.

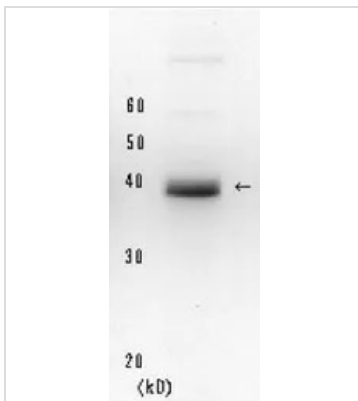
**Note**

Purchasers shall not, and agree not to enable third parties to, analyze, copy, reverse engineer or otherwise attempt to determine the structure or sequence of the product.

**DATA IMAGES**

**GTx00704 ICC/IF Image**

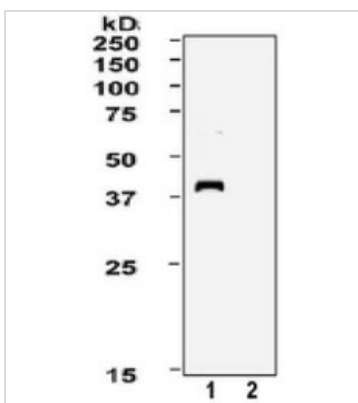
ICC/IF analysis of GM0637 cells irradiated with UV at 20 J/m<sup>2</sup> using GTx00704 XPA antibody [5F12].

Dilution : 1:100


**GTx00704 WB Image**

WB analysis of HeLa whole cell lysate using GTx00704 XPA antibody [5F12].

Dilution : 1:2000


**GTx00704 WB Image**

WB analysis of various samples using GTx00704 XPA antibody [5F12].

Lane 1 : HeLa whole cell lysate (XpA wild-type)

Lane 2 : XP12ROSV whole cell lysate (XpA deficient)

Dilution : 1:2000



For full product information, images and publications, please visit our [website](https://www.genetex.com).