

Glyoxalase I antibody [6F10]

Cat. No. GTX00705

Host	Rat
Clonality	Monoclonal
Isotype	IgG2b
Application	WB, ICC/IF, ELISA
Reactivity	Human, Mouse, Monkey, Simian

Reference (2)
Package
100 µg

APPLICATION

Application Note

*Optimal dilutions/concentrations should be determined by the researcher.

Suggested dilution	Recommended dilution
WB	~1:1000
ICC/IF	Assay dependent
ELISA	Assay dependent

Not tested in other applications.

Calculated MW 21 kDa. ([Note](#))

PROPERTIES

Form	Liquid
Buffer	Filter-sterilized PBS, 50% Glycerol
Preservative	No preservative
Storage	Store as concentrated solution. Centrifuge briefly prior to opening vial. For short-term storage (1-2 weeks), store at 4°C. For long-term storage, aliquot and store at -20°C or below. Avoid multiple freeze-thaw cycles.
Concentration	1 mg/ml (Please refer to the vial label for the specific concentration.)
Immunogen	Recombinant GST-fused mouse glyoxalase I (full length)
Purification	Purified IgG From tissue culture supernatant
Conjugation	Unconjugated

Note

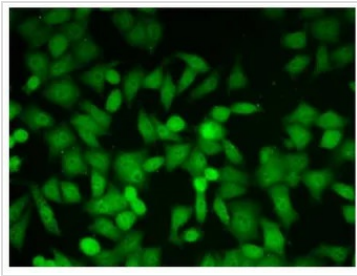
For laboratory research use only. Not for any clinical, therapeutic, or diagnostic use in humans or animals. Not for animal or human consumption.

Purchasers shall not, and agree not to enable third parties to, analyze, copy, reverse engineer or otherwise attempt to determine the structure or sequence of the product.



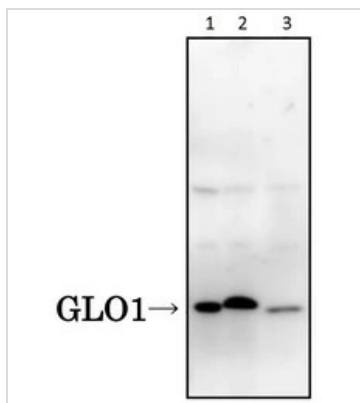
For full product information, images and publications, please visit our [website](#).

DATA IMAGES



GTX00705 ICC/IF Image

ICC/IF analysis of HeLa cells using GTX00705 Glyoxalase I antibody [6F10].



GTX00705 WB Image

WB analysis of various samples using GTX00705 Glyoxalase I antibody [6F10]. Mouse GLO1 shows a single band of 27 kDa while human and simian ones show 29 kDa.

Lane 1 : COS-1 whole cell lysate

Lane 2 : L929 whole cell lysate

Lane 3 : HeLa whole cell lysate



For full product information, images and publications, please visit our [website](https://www.genetex.com).