

# Nestin antibody [7A3]

**Cat. No. GTX00706**

<b>Host</b>	Rat
<b>Clonality</b>	Monoclonal
<b>Isotype</b>	IgG2b
<b>Applications</b>	ICC/IF, IHC-Fr
<b>Reactivity</b>	Mouse

References ( 1 )

Package

200 µg

## Applications

### Application Note

\*Optimal dilutions/concentrations should be determined by the researcher.

Suggested dilution	Recommended dilution
ICC/IF	Assay dependent
IHC-Fr	Assay dependent

Not tested in other applications.

## Properties

<b>Form</b>	Liquid
<b>Buffer</b>	Filter-sterilized PBS, 50% Glycerol
<b>Preservative</b>	No preservative
<b>Storage</b>	Store as concentrated solution. Centrifuge briefly prior to opening vial. For short-term storage (1-2 weeks), store at 4°C. For long-term storage, aliquot and store at -20°C or below. Avoid multiple freeze-thaw cycles.
<b>Concentration</b>	1 mg/ml (Please refer to the vial label for the specific concentration.)
<b>Immunogen</b>	Mouse E16 embryonic cerebral cortex extracts
<b>Purification</b>	Purified IgG From tissue culture supernatant
<b>Conjugation</b>	Unconjugated

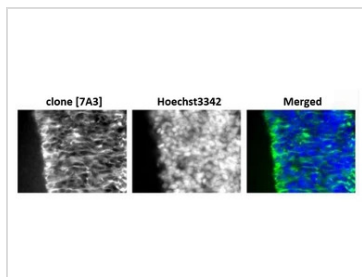
### Note

For laboratory research use only. Not for any clinical, therapeutic, or diagnostic use in humans or animals. Not for animal or human consumption.

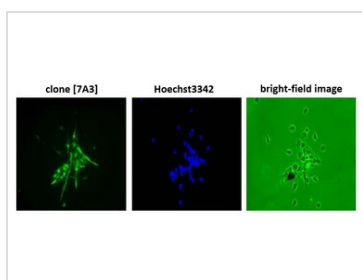
Purchasers shall not, and agree not to enable third parties to, analyze, copy, reverse engineer or otherwise attempt to determine the structure or sequence of the product.



For full product information, images and publications, please visit our [website](#).

**DATA IMAGES**

**GTX00706 IHC-Fr Image**

IHC-Fr analysis of mouse cerebral cortex (E16) tissue section using GTX00706 Nestin antibody [7A3].  
Dilution : 1:100


**GTX00706 ICC/IF Image**

ICC/IF analysis of Neural progenitor primary cultured cells from mouse fetal brain using GTX00706 Nestin antibody [7A3].



For full product information, images and publications, please visit our [website](#).