

EID1 antibody [26]

Cat. No. GTX00710

Host	Mouse
Clonality	Monoclonal
Isotype	IgG2a
Applications	WB, ICC/IF, ELISA
Reactivity	Human

Package
100 µg

Applications

Application Note

*Optimal dilutions/concentrations should be determined by the researcher.

Suggested dilution	Recommended dilution
WB	~1 µg/ml
ICC/IF	1-5 µg/ml
ELISA	Assay dependent

Not tested in other applications.

Calculated MW 21 kDa. ([Note](#))

Properties

Form	Liquid
Buffer	Filter-sterilized PBS, 50% Glycerol
Preservative	No preservatives
Storage	Store as concentrated solution. Centrifuge briefly prior to opening vial. For short-term storage (1-2 weeks), store at 4°C. For long-term storage, aliquot and store at -20°C or below. Avoid multiple freeze-thaw cycles.
Concentration	1 mg/ml (Please refer to the vial label for the specific concentration.)
Immunogen	Synthetic peptide containing amino acids 159-187 of human DIE1 protein
Purification	Purified IgG From tissue culture supernatant
Conjugation	Unconjugated

Note

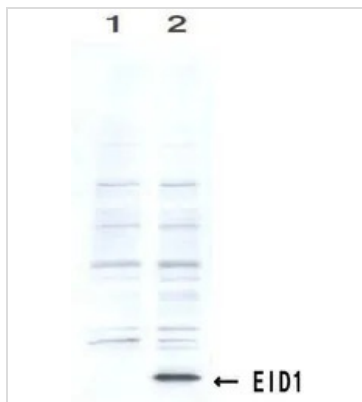
For laboratory research use only. Not for any clinical, therapeutic, or diagnostic use in humans or animals. Not for animal or human consumption.

Purchasers shall not, and agree not to enable third parties to, analyze, copy, reverse engineer or otherwise attempt to determine the structure or sequence of the product.



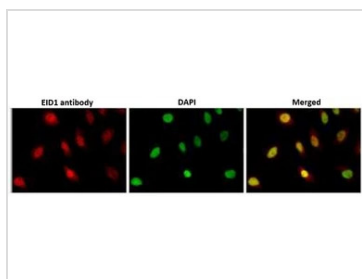
For full product information, images and publications, please visit our [website](#).

DATA IMAGES

**GTX00710 WB Image**

WB analysis of MCF7 mock (Lane 1) or overexpressing E1D1 (Lane 2) using GTX00710 E1D1 antibody [clone 26].

The E1D1 protein was identified as a 21kDa protein band as shown by an arrow.

**GTX00710 ICC/IF Image**

ICC/IF analysis of HeLa cells using GTX00710 E1D1 antibody [clone 26].

Dilution : 1:1000

Fixation : 4% PFA, overnight

Permeabilization : 0.25% Triton X-100 in PBS for 10 min



For full product information, images and publications, please visit our [website](#).