

## Fc epsilon R1 alpha antibody [CRA2]

Cat. No. GTX00712

Host	Mouse
Clonality	Monoclonal
Isotype	IgG1
Applications	WB, ICC/IF, IHC-P, IHC-Fr, FCM, Activation, Neutralizing/Inhibition
Reactivity	Human

Package  
100 µg

## Applications

## Application Note

\*Optimal dilutions/concentrations should be determined by the researcher.

Suggested dilution	Recommended dilution
WB	~1 µg/ml
ICC/IF	Assay dependent
IHC-P	Assay dependent
IHC-Fr	Assay dependent
FCM	Assay dependent
Activation	Assay dependent
Neutralizing/Inhibition	Assay dependent

**Note : It shows the stimulation of serotonin release from human platelets.****It shows the inhibition of binding of IgE with Fc epsilonR1alpha and titration of IgE-bound fraction of the Fc epsilonR1alpha (using CRA1 and CRA2 antibodies).**

Not tested in other applications.

Calculated MW 30 kDa. ( [Note](#) )

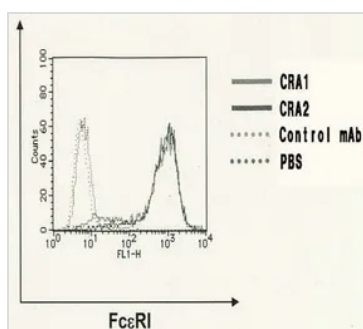
## Properties

Form	Liquid
Buffer	Filter-sterilized PBS, 50% Glycerol
Preservative	No preservatives
Storage	Store as concentrated solution. Centrifuge briefly prior to opening vial. For short-term storage (1-2 weeks), store at 4°C. For long-term storage, aliquot and store at -20°C or below. Avoid multiple freeze-thaw cycles.
Concentration	1 mg/ml (Please refer to the vial label for the specific concentration.)

For full product information, images and publications, please visit our [website](#).

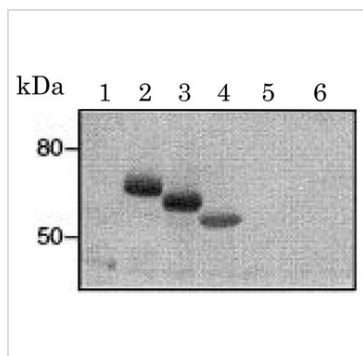
<b>Immunogen</b>	Recombinant extracellular protein of human Fc epsilonR1alpha; (corresponding to amino acids Met-26-197, where signal peptide is 1-25). Epitope: 110-197 amino acids
<b>Purification</b>	Purified IgG From tissue culture supernatant
<b>Conjugation</b>	Unconjugated
<b>Note</b>	For laboratory research use only. Not for any clinical, therapeutic, or diagnostic use in humans or animals. Not for animal or human consumption.  Purchasers shall not, and agree not to enable third parties to, analyze, copy, reverse engineer or otherwise attempt to determine the structure or sequence of the product.

## DATA IMAGES



### GTX00712 FCM Image

FACS analysis of CHO cells overexpressed human Fc epsilon R1 alpha protein using GTX00712 Fc epsilon R1 alpha antibody [CRA2].



### GTX00712 WB Image

WB analysis of E. coli cells overexpressing truncated extracellular domains of Fc epsilon R1 alpha protein (maltose binding protein tagged) using GTX00712 Fc epsilon R1 alpha antibody [CRA2].

Lane 1 : MalE-LacZ (control)

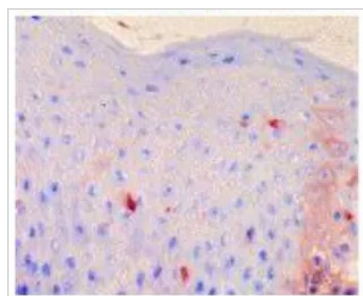
Lane 2 : 26-197

Lane 3 : 68-197

Lane 4 : 26-109

Lane 5 : 26-153

Lane 6 : 68-153



### GTX00712 IHC-Fr Image

IHC-Fr analysis of human atopic dermatitis lesional skin tissue section using GTX00712 Fc epsilon R1 alpha antibody [CRA2].

Fixation : Aceton



For full product information, images and publications, please visit our [website](https://www.genetex.com).