

Nup153 antibody [R4C8]

Cat. No. GTX00714

Host	Rat
Clonality	Monoclonal
Isotype	IgG2a
Application	WB, ICC/IF, ELISA
Reactivity	Human, Mouse, Rat, Monkey

Package
200 µg

APPLICATION

Application Note

*Optimal dilutions/concentrations should be determined by the researcher.

Suggested dilution	Recommended dilution
WB	Assay dependent
ICC/IF	Assay dependent
ELISA	Assay dependent

Not tested in other applications.

Calculated MW 154 kDa. ([Note](#))

PROPERTIES

Form	Liquid
Buffer	Filter-sterilized PBS, 50% Glycerol
Preservative	No preservative
Storage	Store as concentrated solution. Centrifuge briefly prior to opening vial. For short-term storage (1-2 weeks), store at 4°C. For long-term storage, aliquot and store at -20°C or below. Avoid multiple freeze-thaw cycles.
Concentration	1 mg/ml (Please refer to the vial label for the specific concentration.)
Immunogen	Recombinant GST-fused rat Nup153 (610-1191aa, Uniprot#P49791) Epitope: 610-1191 aa (Zn finger and FG repeats domain)
Purification	Purified IgG
Conjugation	Unconjugated

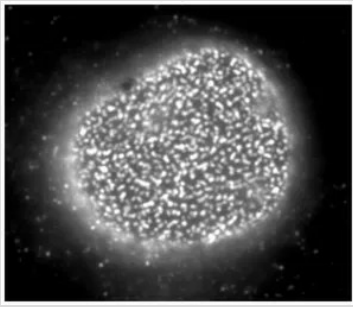
Note For laboratory research use only. Not for any clinical, therapeutic, or diagnostic use in humans or animals. Not for animal or human consumption.

Purchasers shall not, and agree not to enable third parties to, analyze, copy, reverse engineer or otherwise attempt to determine the structure or sequence of the product.



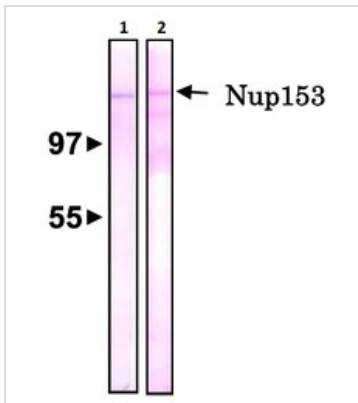
For full product information, images and publications, please visit our [website](#).

DATA IMAGES



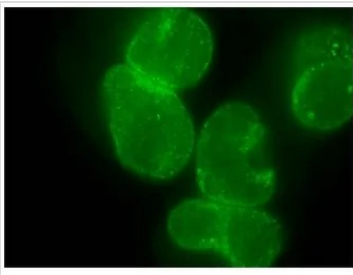
GTX00714 ICC/IF Image

ICC/IF analysis of rat neuron cells using GTX00714 Nup153 antibody [R4C8].
The dots are Nup153.



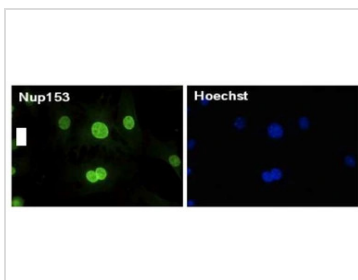
GTX00714 WB Image

WB analysis of various samples using GTX00714 Nup153 antibody [R4C8].
Lane 1 : HeLa whole cell lysate
Lane 2 : NIH3T3 whole cell lysate



GTX00714 ICC/IF Image

ICC/IF analysis of HeLa cells using GTX00714 Nup153 antibody [R4C8].



GTX00714 ICC/IF Image

ICC/IF analysis of MEF cells from E14.5 mouse embryo using GTX00714 Nup153 antibody [R4C8].
Dilution : 1:200
Fixation : 4% PFA at room temperature for 10 min
Permeabilization : Ice-Cold Methanol on ice for 10 min



For full product information, images and publications, please visit our [website](#).