

Clostridium tetani Tetanus toxin antibody [TH-11]

Cat. No. GTX00715

Host	Mouse
Clonality	Monoclonal
Isotype	IgG1
Applications	WB, ELISA, Neutralizing/Inhibition
Reactivity	Clostridium tetani

Package
100 µg

Applications

Application Note

*Optimal dilutions/concentrations should be determined by the researcher.

Suggested dilution	Recommended dilution
WB	1:1000
ELISA	Assay dependent
Neutralizing/Inhibition	Assay dependent

Note : AP_073ralising of the toxin activity (assay dependent)

Not tested in other applications.

Calculated MW	151 kDa. (Note)
Product Note	This antibody could react with Light Chain of tetanus toxin and showed neutralising of the toxin activity.

Properties

Form	Liquid
Buffer	PBS, 50% Glycerol
Preservative	No preservatives
Storage	Store as concentrated solution. Centrifuge briefly prior to opening vial. For short-term storage (1-2 weeks), store at 4°C. For long-term storage, aliquot and store at -20°C or below. Avoid multiple freeze-thaw cycles.
Concentration	1 mg/ml (Please refer to the vial label for the specific concentration.)
Immunogen	Tetanus toxoid (Clostridium tetani Harvard vaccine strain), reacts with Light Chain of tetanus toxin
Purification	Purified IgG From tissue culture supernatant
Conjugation	Unconjugated



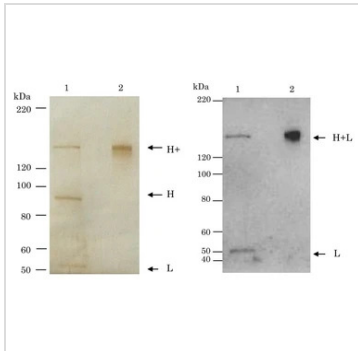
For full product information, images and publications, please visit our [website](#).

For laboratory research use only. Not for any clinical, therapeutic, or diagnostic use in humans or animals. Not for animal or human consumption.

Note

Purchasers shall not, and agree not to enable third parties to, analyze, copy, reverse engineer or otherwise attempt to determine the structure or sequence of the product.

DATA IMAGES



GTX00715 WB Image

WB analysis of reduced (lane 1) and non-reduced (lane 2) Tetanus Toxin using Clostridium tetani Tetanus toxin antibody [TH-11] The antibody (TH11) recognizes Light chain of the toxin.

Left panel: silver staining

Right panel : Western blot

Dilution : 1:1000

H: Heavy chain

L: Light chain

H+L: Heavy and Light chains



For full product information, images and publications, please visit our [website](https://www.genetex.com).