

Haploid sperm cell-specific antigen antibody [TRA54]

Cat. No. GTX00716

Host	Rat
Clonality	Monoclonal
Isotype	IgM
Applications	WB, ICC/IF, IHC-P, IHC-Fr, IP, Dot, EM
Reactivity	Mouse, Rat

References (3)

Package

100 µg

PRODUCT

Summary

Many transcripts for proteins specifically expressed in haploid germ cells are synthesized in the spermatogenesis. A monoclonal antibody TRA54 recognizes specific organelles in germ cell cytoplasm from spermatocytes to spermatids. Western blots using TRA54 revealed broad bands with 85 kD, 190 kD and >200 kDa in testis probably due to alternative splicing and/or post-translational modification. The molecular size diversity is due to the difference in glycosylation.

Applications

Application Note

*Optimal dilutions/concentrations should be determined by the researcher.

Suggested dilution	Recommended dilution
WB	~1 µg/ml
ICC/IF	Assay dependent
IHC-P	Assay dependent
IHC-Fr	Assay dependent
IP	Assay dependent
Dot	Assay dependent
EM	Assay dependent

Not tested in other applications.

Properties

Form	Liquid
Buffer	PBS, 50% Glycerol
Preservative	No preservatives
Storage	Store as concentrated solution. Centrifuge briefly prior to opening vial. For short-term storage (1-2 weeks), store at 4°C. For long-term storage, aliquot and store at -20°C or below. Avoid multiple freeze-thaw cycles.
Concentration	1 mg/ml (Please refer to the vial label for the specific concentration.)
Immunogen	adult mouse testis



For full product information, images and publications, please visit our [website](#).

Purification
Purified IgM
From tissue culture supernatant

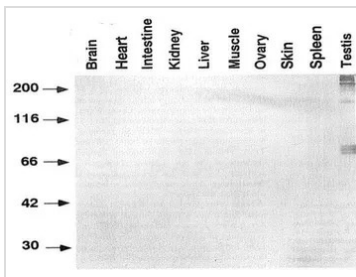
Conjugation
Unconjugated

Note

For laboratory research use only. Not for any clinical, therapeutic, or diagnostic use in humans or animals. Not for animal or human consumption.

Purchasers shall not, and agree not to enable third parties to, analyze, copy, reverse engineer or otherwise attempt to determine the structure or sequence of the product.

DATA IMAGES

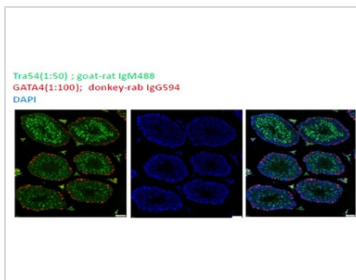


GTX00716 WB Image

WB analysis of various mouse tissue samples using GTX00716 Haploid sperm cell-specific antigen antibody [TRA54].

Dilution : 1 µg/ml

Loading : 100 µg



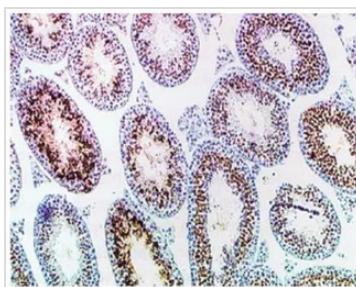
GTX00716 IHC-P Image

IHC-P analysis of mouse testis tissue section (8-month) using GTX00716 Haploid sperm cell-specific antigen antibody [TRA54]. Anti-GATA antibody stains nuclei of Sertoli cells in seminiferous tubule while anti-TRA54 antibody stains reproductive cells.

Dilution : 1:50

Antigen retrieval : 10 mM citrate buffer (pH 6.0) for 15min

Fixation : 4% PFA



GTX00716 IHC-P Image

IHC-P analysis of mouse testis tissue section (C57BL/6) using GTX00716 Haploid sperm cell-specific antigen antibody [TRA54].

Fixation : Bouin's solution



For full product information, images and publications, please visit our [website](https://www.genetex.com).