

## Germ cell-specific antigen antibody [TRA98]

Cat. No. GTX00717

<b>Host</b>	Rat
<b>Clonality</b>	Monoclonal
<b>Isotype</b>	IgG2a
<b>Applications</b>	WB, ICC/IF, IHC-P, IHC-Fr, FCM, IP, IHC
<b>Reactivity</b>	Mouse

References ( 3 )

Package

100 µg

## PRODUCT

## Summary

This antibody recognizes a mouse testicular germ cell-specific antigen. In adult tissues, bands of 60-100 kDa proteins are detected only in the testis by Western blotting analysis with this antibody. The signals are observed in male and female embryos after embryonic day 12.5. The signal in male is detected during development of germ cells and also after birth, but the signal in female disappears by 5 days after birth. The antigen is localized only in the nuclear fraction of testicular germ cells and this antibody can be used for immunohistochemical staining of testicular germ cells.

## Applications

## Application Note

\*Optimal dilutions/concentrations should be determined by the researcher.

Suggested dilution	Recommended dilution
WB	1:1000-1:5000
ICC/IF	1:400
IHC-P	1:200-1:500
IHC-Fr	1:200-1:500
FCM	Assay dependent
IP	1:200
IHC	Assay dependent

Not tested in other applications.

## Properties

<b>Form</b>	Liquid
<b>Buffer</b>	PBS, 50% Glycerol
<b>Preservative</b>	No preservatives
<b>Storage</b>	Store as concentrated solution. Centrifuge briefly prior to opening vial. For short-term storage (1-2 weeks), store at 4°C. For long-term storage, aliquot and store at -20°C or below. Avoid multiple freeze-thaw cycles.
<b>Concentration</b>	1 mg/ml (Please refer to the vial label for the specific concentration.)
<b>Immunogen</b>	adult mouse testis



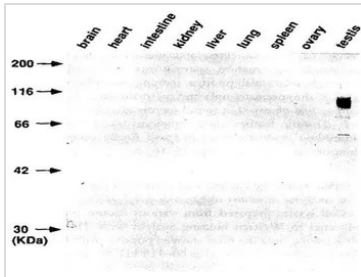
For full product information, images and publications, please visit our [website](#).

<b>Purification</b>	Purified IgG
<b>Conjugation</b>	Unconjugated

For laboratory research use only. Not for any clinical, therapeutic, or diagnostic use in humans or animals. Not for animal or human consumption.

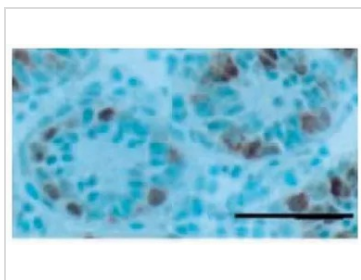
**Note**  
Purchasers shall not, and agree not to enable third parties to, analyze, copy, reverse engineer or otherwise attempt to determine the structure or sequence of the product.

DATA IMAGES



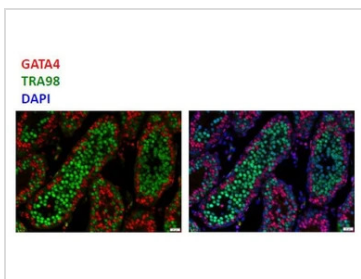
**GTX00717 WB Image**

WB analysis of various mouse tissue samples using GTX00717 Germ cell-specific antigen antibody [TRA98]. This protein is testis-specific.  
Dilution : 1 µg/ml  
Loading : 100 µg  
This protein is testis-specific.



**GTX00717 IHC-Fr Image**

IHC-Fr analysis of mouse testis tissue section (7-day-old) using GTX00717 Germ cell-specific antigen antibody [TRA98].  
Scale bar : 50 µm



**GTX00717 IHC-P Image**

IHC-P analysis of mouse testis tissue section (10-day-old) using GTX00717 Germ cell-specific antigen antibody [TRA98]. Anti-GATA antibody stains nuclei of Sertoli cells in seminiferous tubule while anti-TRA54 antibody stains reproductive cells.  
Dilution : 1:400  
Antigen retrieval : 10 mM citrate buffer (pH 6.0) for 15min  
Fixation : 4% PFA



For full product information, images and publications, please visit our [website](#).