

# Rad51 antibody

**Cat. No. GTX00720**

<b>Host</b>	Rabbit
<b>Clonality</b>	Polyclonal
<b>Isotype</b>	IgG
<b>Application</b>	WB, ICC/IF, IHC-P, IP, Dot, ELISA, ChIP assay
<b>Reactivity</b>	Human, Mouse, Rat, Chicken, Xenopus, Rodent, Chinese Hamster

**Package**  
100 µg

## APPLICATION

### Application Note

\*Optimal dilutions/concentrations should be determined by the researcher.

Suggested dilution	Recommended dilution
WB	1:1000-1:10000
ICC/IF	1:1000-1:10000
IHC-P	1:100-1:1000
IP	1:100-1:1000
Dot	1:1000-1:5000
ELISA	1:2000-1:5000
ChIP assay	Assay dependent

Not tested in other applications.

**Calculated MW** 37 kDa. ( [Note](#) )

## PROPERTIES

<b>Form</b>	Liquid
<b>Buffer</b>	Filter-sterilized PBS, 50% Glycerol
<b>Preservative</b>	No preservative
<b>Storage</b>	Store as concentrated solution. Centrifuge briefly prior to opening vial. For short-term storage (1-2 weeks), store at 4°C. For long-term storage, aliquot and store at -20°C or below. Avoid multiple freeze-thaw cycles.
<b>Concentration</b>	1 mg/ml (Please refer to the vial label for the specific concentration.)
<b>Immunogen</b>	Full-size recombinant human Rad51 protein
<b>Purification</b>	Purified by antigen-affinity chromatography
<b>Conjugation</b>	Unconjugated



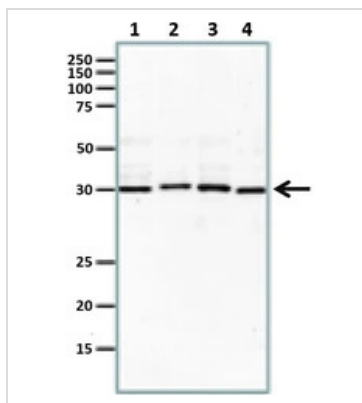
For full product information, images and publications, please visit our [website](#).

For laboratory research use only. Not for any clinical, therapeutic, or diagnostic use in humans or animals. Not for animal or human consumption.

## Note

Purchasers shall not, and agree not to enable third parties to, analyze, copy, reverse engineer or otherwise attempt to determine the structure or sequence of the product.

## DATA IMAGES



### GTx00720 WB Image

WB analysis of various samples using GTx00720 Rad51 antibody.

Lane 1 : MCF-7 whole cell lysate

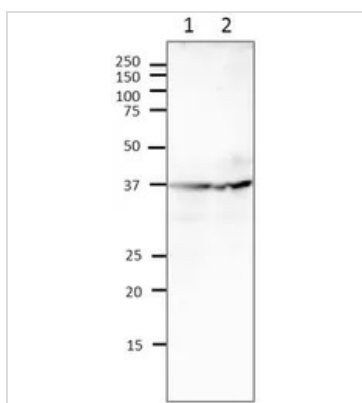
Lane 2 : NIH3T3 whole cell lysate

Lane 3 : CHO whole cell lysate

Lane 4 : Xenopus laevis (frog) egg.

Dilution : 1:1000

Loading : 40µg



### GTx00720 WB Image

WB analysis of various samples using GTx00720 Rad51 antibody.

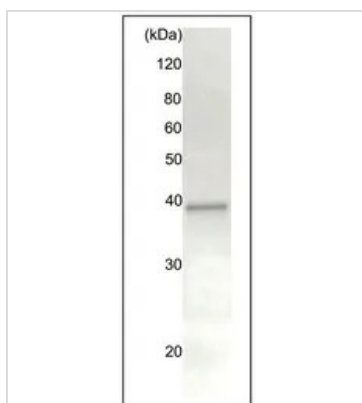
Lane 1 : MCF-7 whole cell lysate

Lane 2 : PC12 whole cell lysate

Dilution : 1:1000

Loading : 80µg

SDS-PAGE : 12.5%



### GTx00720 IP Image

IP analysis of HeLa whole cell lysate using GTx00720 Rad51 antibody.

The amount of HeLa whole cell lysate and protein A-beads both were using 20 µg.

IP antibody : 20 µg

IB antibody : 20 µg



For full product information, images and publications, please visit our [website](https://www.genetex.com).