

PCNA antibody

Cat. No. GTX00723

Host	Rabbit
Clonality	Polyclonal
Isotype	IgG
Applications	WB, ICC/IF, IP, Dot, ELISA
Reactivity	Human, Mouse, Rat, Hamster, Chicken, Xenopus, Chinese Hamster

Package
100 µg

Applications

Application Note

*Optimal dilutions/concentrations should be determined by the researcher.

Suggested dilution	Recommended dilution
WB	1:1000-1:2000
ICC/IF	1:100-1:1000
IP	1:100-1:500
Dot	1:500-1:2000
ELISA	1:500-1:2000

Note : It could detect 0.3 ng of PCNA.

Not tested in other applications.

Calculated MW	29 kDa. (Note)
Product Note	This antibody could detect 0.3 ng of PCNA by dot blot.

Properties

Form	Liquid
Buffer	Filter-sterilized PBS, 50% Glycerol
Preservative	No preservatives
Storage	Store as concentrated solution. Centrifuge briefly prior to opening vial. For short-term storage (1-2 weeks), store at 4°C. For long-term storage, aliquot and store at -20°C or below. Avoid multiple freeze-thaw cycles.
Concentration	1 mg/ml (Please refer to the vial label for the specific concentration.)
Immunogen	Purified recombinant human PCNA (full-size, no-tag attached)
Purification	Purified IgG
Conjugation	Unconjugated

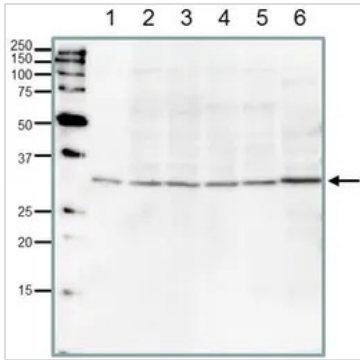


For full product information, images and publications, please visit our [website](#).

For laboratory research use only. Not for any clinical, therapeutic, or diagnostic use in humans or animals. Not for animal or human consumption.

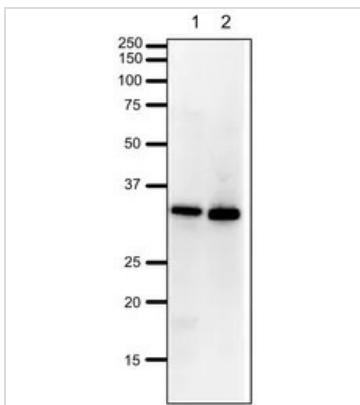
Note
 Purchasers shall not, and agree not to enable third parties to, analyze, copy, reverse engineer or otherwise attempt to determine the structure or sequence of the product.

DATA IMAGES



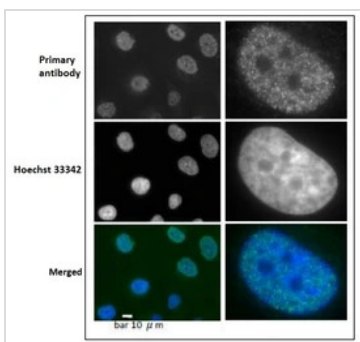
GTX00723 WB Image

WB analysis of various samples using GTX00723 PCNA antibody.
 Lane 1 : Full-length recombinant human PCNA protein (5 ng)
 Lane 2 : HeLa whole cell lysate (20 µg)
 Lane 3 : MCF-7 whole cell lysate (20 µg)
 Lane 4 : NIH3T3 whole cell lysate (20 µg)
 Lane 5 : CHO whole cell lysate (20 µg)
 Lane 6 : Xenopus laevis egg (frog; 20 µg)
 Dilution : 1:1000



GTX00723 WB Image

WB analysis of various samples using GTX00723 PCNA antibody.
 Lane 1 : HeLa whole cell lysate
 Lane 2 : Xenopus egg extract
 Dilution : 1:1000
 Loading : 20 µg



GTX00723 ICC/IF Image

ICC/IF analysis of GM0637 cells using GTX00723 PCNA antibody.
 Green : Primary antibody
 Blue : Hoechst 33342
 Dilution : 1:100
 Fixation : 4% PFA
 Permeabilization : 0.5% Triton X-100



For full product information, images and publications, please visit our [website](#).