

DDX3 antibody

Cat. No. GTX00724

Host	Rabbit
Clonality	Polyclonal
Isotype	IgG
Applications	WB, ICC/IF, IHC-Fr
Reactivity	Human, Mouse, Monkey, Rodent

Package
100 µl

Applications

Application Note

*Optimal dilutions/concentrations should be determined by the researcher.

Suggested dilution	Recommended dilution
WB	1:1000-1:5000
ICC/IF	1:500
IHC-Fr	1:200

Not tested in other applications.

Calculated MW 73 kDa. ([Note](#))

Properties

Form	Liquid
Buffer	Serum
Preservative	0.05% Sodium azide
Storage	Store as concentrated solution. Centrifuge briefly prior to opening vial. For short-term storage (1-2 weeks), store at 4°C. For long-term storage, aliquot and store at -20°C or below. Avoid multiple freeze-thaw cycles.
Immunogen	Purified full-length human DDX3X fused with GST
Purification	Unpurified
Conjugation	Unconjugated

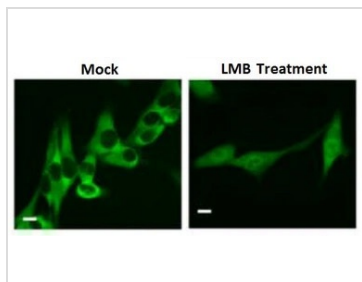
Note For laboratory research use only. Not for any clinical, therapeutic, or diagnostic use in humans or animals. Not for animal or human consumption.

Purchasers shall not, and agree not to enable third parties to, analyze, copy, reverse engineer or otherwise attempt to determine the structure or sequence of the product.



For full product information, images and publications, please visit our [website](#).

DATA IMAGES

**GTX00724 ICC/IF Image**

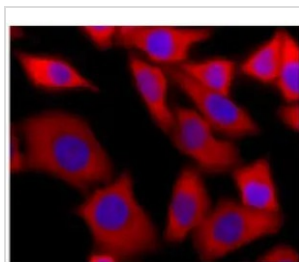
ICC/IF analysis of HeLa cells treated with/without LMB using GTX00724 DDX3 antibody.

LMB: a nuclear translocation inhibitor

Dilution : 1:500

Fixation : 4% PFA

DDX3X is localized in cytoplasm in the absence of treatment, but once treated with LMB, a nuclear translocation inhibitor, it is localized not only in cytoplasm but also in nuclei.

**GTX00724 ICC/IF Image**

ICC/IF analysis of HeLa cells using GTX00724 DDX3 antibody.

Red : Primary antibody

Blue : Hoechst 33342

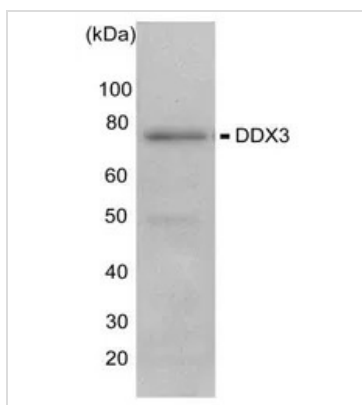
Dilution : 1:500

**GTX00724 IHC-Fr Image**

IHC-Fr analysis of mouse testis tissue section using GTX00724 DDX3 antibody.

Arrows indicate Leydig cells.

Dilution : 1:200

**GTX00724 WB Image**

WB analysis of HeLa whole cell lysate using GTX00724 DDX3 antibody.

Dilution : 1:1000

Loading : 10µg



For full product information, images and publications, please visit our [website](#).