

RanBP9 antibody

Cat. No. GTX00728

Host	Rabbit
Clonality	Polyclonal
Isotype	IgG
Application	WB, ICC/IF, IHC-P, IP
Reactivity	Human, Mouse, Dog, Hamster, Monkey, Rodent, Chinese Hamster

Package
100 µl

APPLICATION

Application Note

*Optimal dilutions/concentrations should be determined by the researcher.

Suggested dilution	Recommended dilution
WB	1:1000-1:2000
ICC/IF	1:200-1:1000
IHC-P	1:200
IP	Assay dependent

Note : Recommend using a heat mediated antigen retrieval with citrate buffer (pH 6.0).

Not tested in other applications.

Calculated MW 78 kDa. ([Note](#))

PROPERTIES

Form	Liquid
Buffer	Serum
Preservative	0.09% Sodium azide
Storage	Store as concentrated solution. Centrifuge briefly prior to opening vial. For short-term storage (1-2 weeks), store at 4°C. For long-term storage, aliquot and store at -20°C or below. Avoid multiple freeze-thaw cycles.
Immunogen	Recombinant human RanBP9 from Phe133 to Tyr 229
Purification	Unpurified
Conjugation	Unconjugated

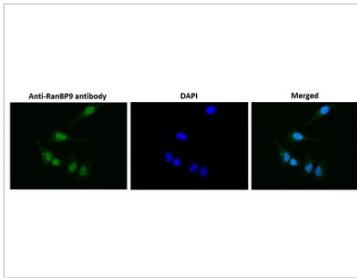
Note

For laboratory research use only. Not for any clinical, therapeutic, or diagnostic use in humans or animals. Not for animal or human consumption.

Purchasers shall not, and agree not to enable third parties to, analyze, copy, reverse engineer or otherwise attempt to determine the structure or sequence of the product.



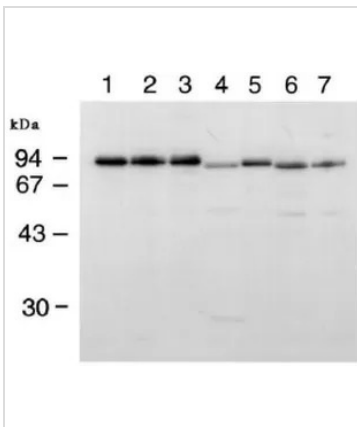
For full product information, images and publications, please visit our [website](#).

DATA IMAGES

GTX00728 ICC/IF Image

ICC/IF analysis of HeLa cells using GTX00728 RanBP9 antibody.

Dilution : 1:1000

Fixation : 4% PFA


GTX00728 WB Image

WB analysis of various samples using GTX00728 RanBP9 antibody.

Lane 1 : HeLa whole cell lysate

Lane 2 : KB whole cell lysate

Lane 3 : Cos-7 whole cell lysate

Lane 4 : BHK21 whole cell lysate

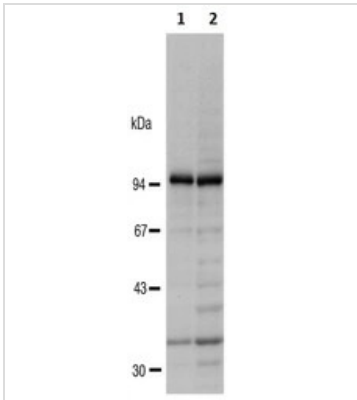
Lane 5 : CHO whole cell lysate

Lane 6 : WEHI whole cell lysate

Lane 7 : FM3A whole cell lysate

Dilution : 1:1000

Loading : 50 µg


GTX00728 WB Image

WB analysis of various samples using GTX00728 RanBP9 antibody.

Lane 1 : HeLa whole cell lysate

Lane 2 : U2OS whole cell lysate

Dilution : 1:2000



For full product information, images and publications, please visit our [website](https://www.genetex.com).