

## RANBP2 antibody

Cat. No. GTX00729

Host	Rabbit
Clonality	Polyclonal
Isotype	IgG
Applications	WB, ICC/IF, IP
Reactivity	Human, Mouse, Rat

Package  
100 µl

## Applications

## Application Note

\*Optimal dilutions/concentrations should be determined by the researcher.

Suggested dilution	Recommended dilution
WB	~1:1000
ICC/IF	Assay dependent
IP	Assay dependent

Not tested in other applications.

Calculated MW 358 kDa. ([Note](#))

## Properties

Form	Liquid
Buffer	Serum
Preservative	0.09% Sodium azide
Storage	Store as concentrated solution. Centrifuge briefly prior to opening vial. For short-term storage (1-2 weeks), store at 4°C. For long-term storage, aliquot and store at -20°C or below. Avoid multiple freeze-thaw cycles.
Immunogen	synthetic peptide corresponding to 3 times-repeated sequences in RanBP2; SKAPKSGFEGMFTKKE
Purification	Unpurified
Conjugation	Unconjugated

## Note

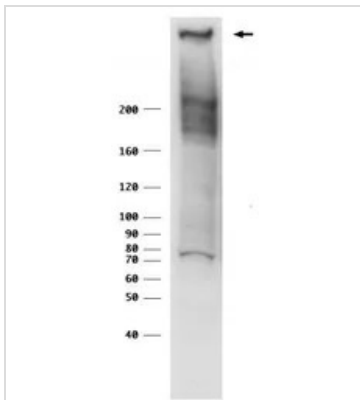
For laboratory research use only. Not for any clinical, therapeutic, or diagnostic use in humans or animals. Not for animal or human consumption.

Purchasers shall not, and agree not to enable third parties to, analyze, copy, reverse engineer or otherwise attempt to determine the structure or sequence of the product.



For full product information, images and publications, please visit our [website](#).

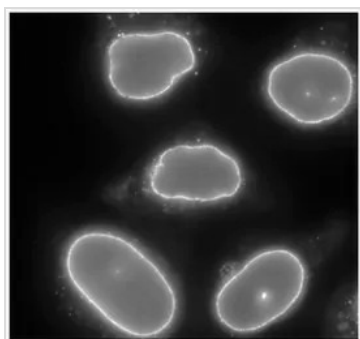
## DATA IMAGES



### GTx00729 WB Image

WB analysis of HeLa whole cell lysate using GTx00729 RANBP2 antibody.

Dilution : 1:1000



### GTx00729 ICC/IF Image

ICC/IF analysis of HeLa cells using GTx00729 RANBP2 antibody.

Dilution : 1:2000

Fixation : 4% PFA



For full product information, images and publications, please visit our [website](#).