

RRAGA antibody

Cat. No. GTX00730

Host	Rabbit
Clonality	Polyclonal
Isotype	IgG
Application	WB, ICC/IF
Reactivity	Human, Mouse, Rat, Hamster, Xenopus

Package
100 µl

APPLICATION

Application Note

*Optimal dilutions/concentrations should be determined by the researcher.

Suggested dilution	Recommended dilution
WB	1:1000-1:2000
ICC/IF	Assay dependent

Not tested in other applications.

Calculated MW 37 kDa. ([Note](#))

PROPERTIES

Form	Liquid
Buffer	Serum
Preservative	0.05% Sodium azide
Storage	Store as concentrated solution. Centrifuge briefly prior to opening vial. For short-term storage (1-2 weeks), store at 4°C. For long-term storage, aliquot and store at -20°C or below. Avoid multiple freeze-thaw cycles.
Immunogen	Purified full-length human RagA protein fused with GST
Purification	Unpurified
Conjugation	Unconjugated

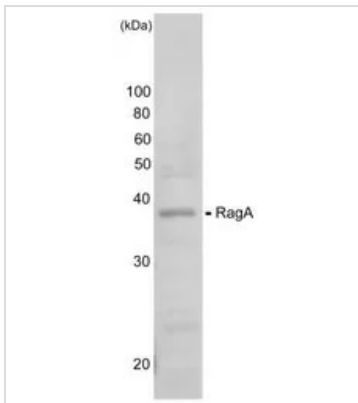
Note

For laboratory research use only. Not for any clinical, therapeutic, or diagnostic use in humans or animals. Not for animal or human consumption.

Purchasers shall not, and agree not to enable third parties to, analyze, copy, reverse engineer or otherwise attempt to determine the structure or sequence of the product.



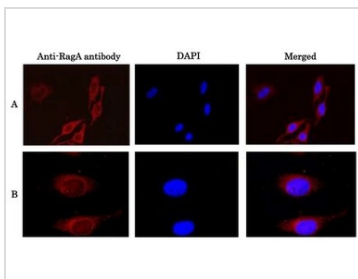
For full product information, images and publications, please visit our [website](#).

DATA IMAGES

GTX00730 WB Image

WB analysis of HeLa whole cell lysate using GTX00730 RRAGA antibody.

Dilution : 1:1000

Loading : 10 µg


GTX00730 ICC/IF Image

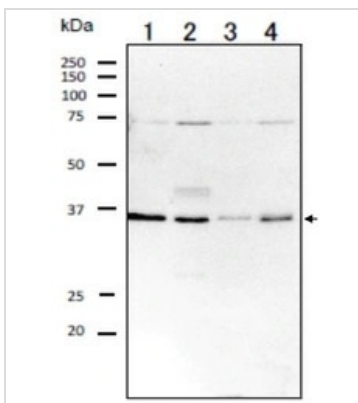
ICC/IF analysis of HeLa cells using GTX00730 RRAGA antibody.

A : 1:100

B : 1:1000

Fixation : 4% PFA

Permeabilization : 0.5% Triton X-100


GTX00730 WB Image

WB analysis of various samples using GTX00730 RRAGA antibody.

Lane 1 : HeLa whole cell lysate

Lane 2 : MCF-7 whole cell lysate

Lane 3 : MOLT4 whole cell lysate

Lane 4 : NIH3T3 whole cell lysate

Dilution : 1:1000

Loading : 20 µg

SDS-PAGE : 12.5%



For full product information, images and publications, please visit our [website](#).