

Rag C antibody

Cat. No. GTX00731

Host	Rabbit
Clonality	Polyclonal
Isotype	IgG
Applications	WB, ICC/IF
Reactivity	Human, Mouse, Hamster

Package
100 µl

Applications

Application Note

*Optimal dilutions/concentrations should be determined by the researcher.

Suggested dilution	Recommended dilution
WB	1:1000-1:2000
ICC/IF	1:100-1:500

Not tested in other applications.

Calculated MW 44 kDa. ([Note](#))

Properties

Form	Liquid
Buffer	Filter-sterilized PBS, 50% Glycerol
Preservative	No preservatives
Storage	Store as concentrated solution. Centrifuge briefly prior to opening vial. For short-term storage (1-2 weeks), store at 4°C. For long-term storage, aliquot and store at -20°C or below. Avoid multiple freeze-thaw cycles.
Concentration	1 mg/ml (Please refer to the vial label for the specific concentration.)
Immunogen	Purified full-length human Rag C protein fused with GST
Purification	Purified IgG
Conjugation	Unconjugated

Note

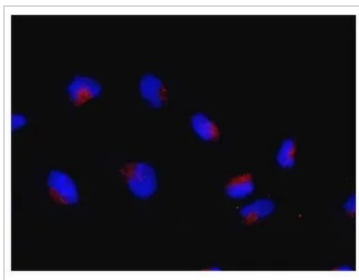
For laboratory research use only. Not for any clinical, therapeutic, or diagnostic use in humans or animals. Not for animal or human consumption.

Purchasers shall not, and agree not to enable third parties to, analyze, copy, reverse engineer or otherwise attempt to determine the structure or sequence of the product.



For full product information, images and publications, please visit our [website](#).

DATA IMAGES

**GTX00731 ICC/IF Image**

ICC/IF analysis of HeLa cells using GTX00731 Rag C antibody.

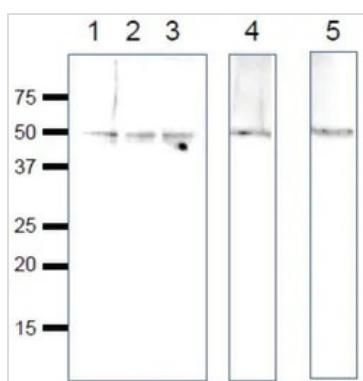
Red : Primary antibody

Blue : DAPI

Dilution : 1:100

Fixation : 4% PFA

Permeabilization : 0.5% Triton X-100

**GTX00731 WB Image**

WB analysis of various samples using GTX00731 Rag C antibody.

Lane 1 : HeLa whole cell lysate

Lane 2 : MCF-7 whole cell lysate

Lane 3 : MOLT-4 whole cell lysate

Lane 4 : NIH3T3 whole cell lysate

Lane 5 : CHO whole cell lysate

Dilution : 1:1000

Loading : 20 μ g



For full product information, images and publications, please visit our [website](#).