

## SCYL2 antibody

**Cat. No. GTX00732**

<b>Host</b>	Rabbit
<b>Clonality</b>	Polyclonal
<b>Isotype</b>	IgG
<b>Applications</b>	WB, ICC/IF, IP
<b>Reactivity</b>	Human, Mouse, Rat, Hamster

**Package**  
50 µg

## Applications

**Application Note**

\*Optimal dilutions/concentrations should be determined by the researcher.

Suggested dilution	Recommended dilution
WB	1:1000
ICC/IF	1:200-1:1000
IP	1:200-1:1000

Not tested in other applications.

**Calculated MW** 104 kDa. ([Note](#))

## Properties

<b>Form</b>	Liquid
<b>Buffer</b>	PBS, 50% Glycerol
<b>Preservative</b>	No preservatives
<b>Storage</b>	Store as concentrated solution. Centrifuge briefly prior to opening vial. For short-term storage (1-2 weeks), store at 4°C. For long-term storage, aliquot and store at -20°C or below. Avoid multiple freeze-thaw cycles.
<b>Concentration</b>	1 mg/ml (Please refer to the vial label for the specific concentration.)
<b>Immunogen</b>	Human SCYL2 protein (amino acids 528-929) fused with a 6 * His tag
<b>Purification</b>	Purified IgG by Salting-out and ion-exchange chromatography
<b>Conjugation</b>	Unconjugated

**Note**

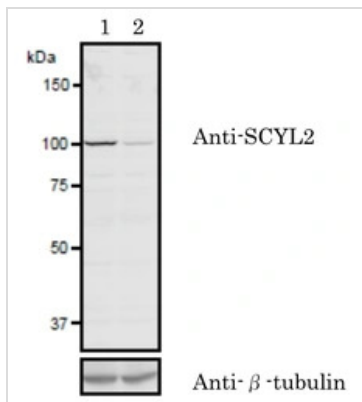
For laboratory research use only. Not for any clinical, therapeutic, or diagnostic use in humans or animals. Not for animal or human consumption.

Purchasers shall not, and agree not to enable third parties to, analyze, copy, reverse engineer or otherwise attempt to determine the structure or sequence of the product.



For full product information, images and publications, please visit our [website](#).

## DATA IMAGES

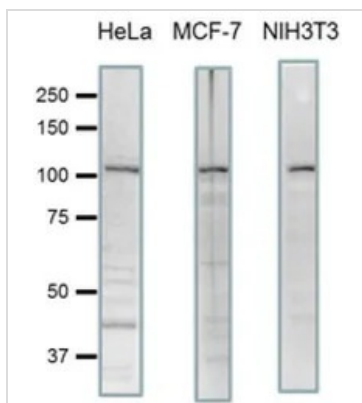
**GTX00732 WB Image**

WB analysis of 293 cell lysate using GTX00732 SCYL2 antibody.

Samples :

Lane 1 : 293 cells transfected with control siRNA

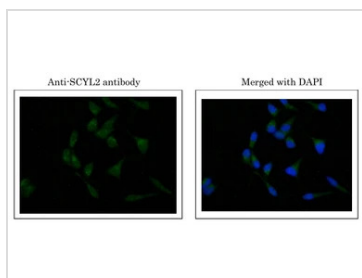
Lane 2 : 293 cells transfected with si-SCYL2

**GTX00732 WB Image**

WB analysis of various samples using GTX00732 SCYL2 antibody.

Dilution : 1:1000

Loading : 20µg

**GTX00732 ICC/IF Image**

ICC/IF analysis of MCF-7 cells using GTX00732 SCYL2 antibody.

Green : Primary antibody

Blue : DAPI

Dilution : 1:1000

Fixation : 4% PFA

Permeabilization : 0.25% Triton X-100 in PBS



For full product information, images and publications, please visit our [website](#).