

# NUF2 antibody

**Cat. No. GTX00733**

<b>Host</b>	Rabbit
<b>Clonality</b>	Polyclonal
<b>Isotype</b>	IgG
<b>Application</b>	WB, ICC/IF
<b>Reactivity</b>	Human, Chicken

**Package**  
100 µl

## APPLICATION

### Application Note

\*Optimal dilutions/concentrations should be determined by the researcher.

Suggested dilution	Recommended dilution
WB	1:500-1:5000
ICC/IF	1:200-1:1000

**Note : Recommend using methanol as the fixation buffer.**

Not tested in other applications.

**Calculated MW** 54 kDa. ( [Note](#) )

## PROPERTIES

<b>Form</b>	Liquid
<b>Buffer</b>	Serum
<b>Preservative</b>	0.05% Sodium azide
<b>Storage</b>	Store as concentrated solution. Centrifuge briefly prior to opening vial. For short-term storage (1-2 weeks), store at 4°C. For long-term storage, aliquot and store at -20°C or below. Avoid multiple freeze-thaw cycles.
<b>Immunogen</b>	Synthetic peptide CGGDSYAKIDEKTAELKRKMFKMS corresponding to the C-terminus region of human Nuf2
<b>Purification</b>	Unpurified
<b>Conjugation</b>	Unconjugated

### Note

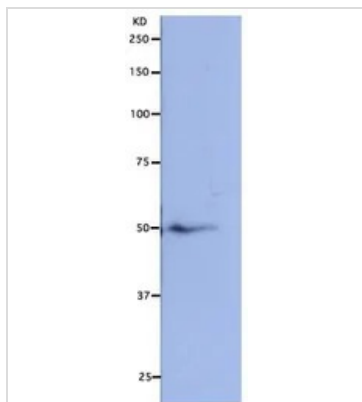
For laboratory research use only. Not for any clinical, therapeutic, or diagnostic use in humans or animals. Not for animal or human consumption.

Purchasers shall not, and agree not to enable third parties to, analyze, copy, reverse engineer or otherwise attempt to determine the structure or sequence of the product.



For full product information, images and publications, please visit our [website](#).

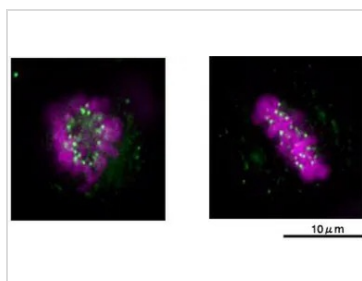
## DATA IMAGES



### GTX00733 WB Image

WB analysis of HeLa whole cell lysate using GTX00733 NUF2 antibody.

Dilution : 1:5000



### GTX00733 ICC/IF Image

ICC/IF analysis of HeLa cells using GTX00733 NUF2 antibody. Nuf2 protein (green) actively localizes to kinetochores at the stages of prometaphase to anaphase.

Green : Primary antibody

Violet : DAPI

Dilution : 1:500

Fixation : Methanol



For full product information, images and publications, please visit our [website](https://www.genetex.com).