

CBX1 / HP1 beta antibody

Cat. No. GTX00736

Host	Rabbit
Clonality	Polyclonal
Isotype	IgG
Applications	WB, ICC/IF, ChIP assay
Reactivity	Human, Hamster

Package
50 µg

Applications

Application Note

*Optimal dilutions/concentrations should be determined by the researcher.

Suggested dilution	Recommended dilution
WB	1:2000-1:10000
ICC/IF	Assay dependent
ChIP assay	Assay dependent

Not tested in other applications.

Calculated MW 21 kDa. ([Note](#))

Properties

Form	Liquid
Buffer	Filter-sterilized 0.12M Sodium Phosphate, 50% Glycerol
Preservative	No preservatives
Storage	Store as concentrated solution. Centrifuge briefly prior to opening vial. For short-term storage (1-2 weeks), store at 4°C. For long-term storage, aliquot and store at -20°C or below. Avoid multiple freeze-thaw cycles.
Concentration	0.44 mg/ml (Please refer to the vial label for the specific concentration.)
Immunogen	synthetic peptide CNEDDDKDDKN including the C-terminal sequence (176-185) of human HP1beta
Purification	Purified by antigen-affinity chromatography
Conjugation	Unconjugated

Note

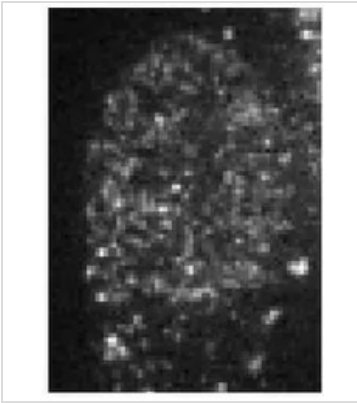
For laboratory research use only. Not for any clinical, therapeutic, or diagnostic use in humans or animals. Not for animal or human consumption.

Purchasers shall not, and agree not to enable third parties to, analyze, copy, reverse engineer or otherwise attempt to determine the structure or sequence of the product.

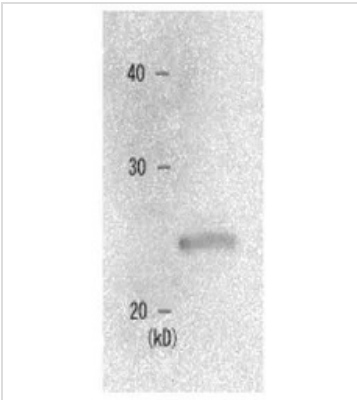


For full product information, images and publications, please visit our [website](#).

DATA IMAGES

**GTX00736 ICC/IF Image**

ICC/IF analysis of Baby Hamster Kidney cells using GTX00736 CBX1 / HP1 beta antibody.
Fixation : 4% PFA

**GTX00736 WB Image**

WB analysis of MCF-7 whole cell lysate using GTX00736 CBX1 / HP1 beta antibody.
Dilution : 1:1000



For full product information, images and publications, please visit our [website](#).