

## Nestin antibody

Cat. No. GTX00737

Host	Rabbit
Clonality	Polyclonal
Isotype	IgG
Applications	WB, ICC/IF, IHC-Fr
Reactivity	Mouse, Rat

Package  
100 µg

## Applications

## Application Note

\*Optimal dilutions/concentrations should be determined by the researcher.

Suggested dilution	Recommended dilution
WB	1:500-1:5000
ICC/IF	1:300-1:1000
IHC-Fr	1:500-1:1000

Not tested in other applications.

Calculated MW	207 kDa. ( <a href="#">Note</a> )
Product Note	We do not recommend use of this product for Human samples.

## Properties

Form	Liquid
Buffer	Filter-sterilized PBS, 50% Glycerol
Preservative	No preservatives
Storage	Store as concentrated solution. Centrifuge briefly prior to opening vial. For short-term storage (1-2 weeks), store at 4°C. For long-term storage, aliquot and store at -20°C or below. Avoid multiple freeze-thaw cycles.
Concentration	2 mg/ml (Please refer to the vial label for the specific concentration.)
Immunogen	Synthetic peptide corresponding to the C-terminal 15 aa of mouse nestin
Purification	Protein A purified
Conjugation	Unconjugated



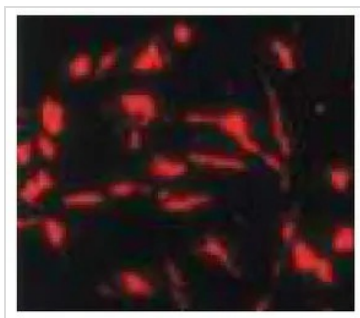
For full product information, images and publications, please visit our [website](#).

For laboratory research use only. Not for any clinical, therapeutic, or diagnostic use in humans or animals. Not for animal or human consumption.

## Note

Purchasers shall not, and agree not to enable third parties to, analyze, copy, reverse engineer or otherwise attempt to determine the structure or sequence of the product.

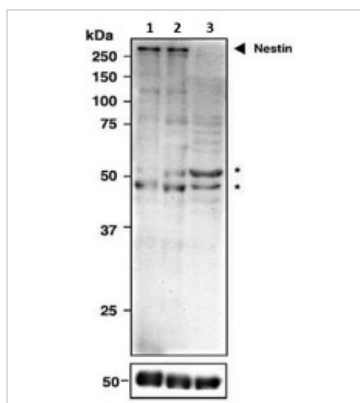
## DATA IMAGES



### GTX00737 ICC/IF Image

ICC/IF analysis of mouse neuroepithelial cells using GTX00737 Nestin antibody.

Dilution : 1:300



### GTX00737 WB Image

WB analysis of various samples using GTX00737 Nestin antibody.

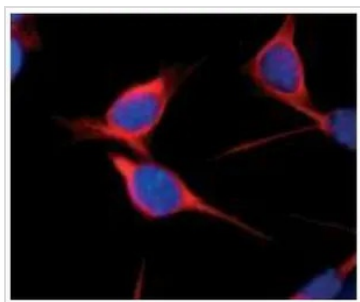
Lane 1 : Mouse neocortex at E14.5

Lane 2 : Neural stem cells in culture prepared from E14.5 mouse neocortex

Lane 3 : Neurons in culture differentiated from neural stem cells

Dilution : 1:500

\* : indicate non-specific bands.



### GTX00737 ICC/IF Image

ICC/IF analysis of Vn19 cells ( derived from mouse ependymoma) using GTX00737 Nestin antibody.

Red : Primary antibody

Blue : Hoechst 33342

Dilution : 1:1000

Fixation : Methanol-Acetone



For full product information, images and publications, please visit our [website](https://www.genetex.com).