

MITF antibody

Cat. No. GTX00738

Host	Rabbit
Clonality	Polyclonal
Isotype	IgG
Applications	WB, ICC/IF, IHC-P, IHC-Fr, ChIP assay
Reactivity	Human, Mouse, Chicken, Xenopus

References (2)

Package

100 µl

Applications

Application Note

*Optimal dilutions/concentrations should be determined by the researcher.

Suggested dilution	Recommended dilution
WB	1:1000-1:3000
ICC/IF	Assay dependent
IHC-P	1:300-1:1000
IHC-Fr	1:300-1:1000
ChIP assay	1:200

Not tested in other applications.

Calculated MW 59 kDa. ([Note](#))

Product Note This antibody recognizes Mitf-M, Mitf-A, Mitf-C, Mitf-H and other Mitf isoforms.

Properties

Form	Liquid
Buffer	Serum
Preservative	0.05% Sodium azide
Storage	Store as concentrated solution. Centrifuge briefly prior to opening vial. For short-term storage (1-2 weeks), store at 4°C. For long-term storage, aliquot and store at -20°C or below. Avoid multiple freeze-thaw cycles.
Immunogen	Recombinant full-size human Mitf (isoform M) protein with His tag
Purification	Unpurified
Conjugation	Unconjugated



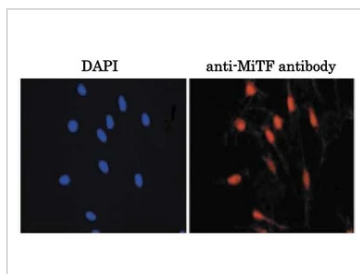
For full product information, images and publications, please visit our [website](#).

For laboratory research use only. Not for any clinical, therapeutic, or diagnostic use in humans or animals. Not for animal or human consumption.

Note

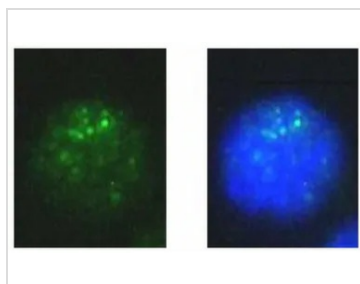
Purchasers shall not, and agree not to enable third parties to, analyze, copy, reverse engineer or otherwise attempt to determine the structure or sequence of the product.

DATA IMAGES



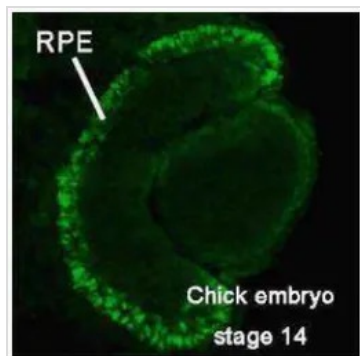
GTX00738 ICC/IF Image

ICC/IF analysis of Mouse primary melanocytes (6 weeks) using GTX00738 MITF antibody.
Dilution : 1:500



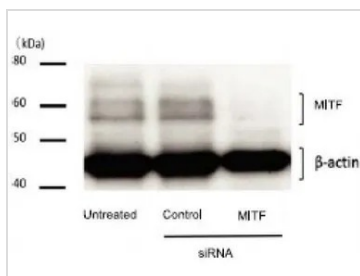
GTX00738 ICC/IF Image

ICC/IF analysis of mouse melanoma B16 cells using GTX00738 MITF antibody.
Green : Primary antibody
Blue : DAPI
Dilution : 1:1000
Fixation : 4% PFA
Permeabilization : 0.25 % Triton X-100



GTX00738 IHC-Fr Image

IHC-Fr analysis of chick embryo (stage 14, 8 μ m) using GTX00738 MITF antibody.
At stage 14, Mitf protein is detected throughout the RPE (Retinal Pigment Epithelium).
Dilution : 1:300
Fixation : 4% PFA



GTX00738 WB Image

WB analysis of various samples using GTX00738 MITF antibody.
Untreated : human melanoma cells
Control : human melanoma cells treated with control siRNA
Mitf : human melanoma cells treated with Mitf siRNA
Dilution : 1:1000



For full product information, images and publications, please visit our [website](#).