

Calreticulin 3 antibody

Cat. No. GTX00741

Host	Rabbit
Clonality	Polyclonal
Isotype	IgG
Applications	WB, IHC-Fr, IP
Reactivity	Mouse

Package
100 µl

Applications

Application Note

*Optimal dilutions/concentrations should be determined by the researcher.

Suggested dilution	Recommended dilution
WB	1:1000
IHC-Fr	1:100
IP	1:100

Not tested in other applications.

Calculated MW 44 kDa. ([Note](#))

Properties

Form	Liquid
Buffer	Serum
Preservative	0.1% Sodium azide
Storage	Store as concentrated solution. Centrifuge briefly prior to opening vial. For short-term storage (1-2 weeks), store at 4°C. For long-term storage, aliquot and store at -20°C or below. Avoid multiple freeze-thaw cycles.
Immunogen	Synthetic peptide corresponding to C-terminal region of mouse CALR3, CMGKFHRHNHLSRFHRQGEL.
Purification	Unpurified
Conjugation	Unconjugated

Note

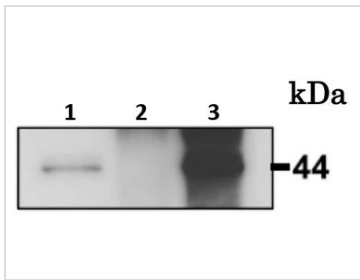
For laboratory research use only. Not for any clinical, therapeutic, or diagnostic use in humans or animals. Not for animal or human consumption.

Purchasers shall not, and agree not to enable third parties to, analyze, copy, reverse engineer or otherwise attempt to determine the structure or sequence of the product.



For full product information, images and publications, please visit our [website](#).

DATA IMAGES

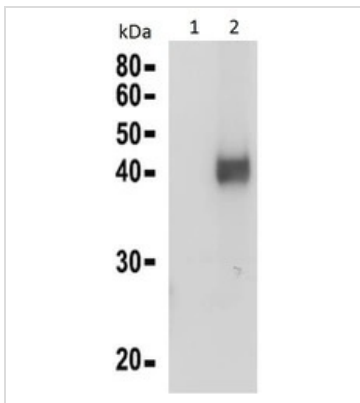
**GTX00741 IP Image**

IP analysis of wild-type mouse testis using GTX00741 Calreticulin 3 antibody.

Lane 1 : Input mouse testis lysate

Lane 2 : Precipitated with preimmune serum

Lane 3 : Precipitated with anti-CALR antibody

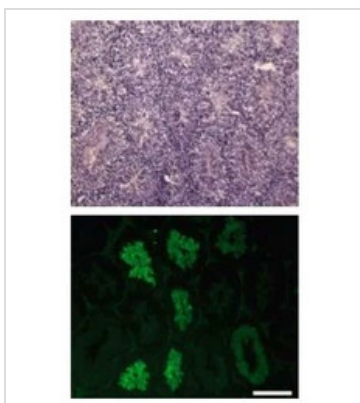
**GTX00741 WB Image**

WB analysis of embryonic fibroblast cells prepared from Calr3 -/- mouse using GTX00741 Calreticulin 3 antibody.

Lane 1 : Mock

Lane 2 : Cells overexpressed Calr3 protein

Dilution : 1:1000

**GTX00741 IHC-Fr Image**

IHC-Fr analysis of mouse testicular tissue section (8 μm) using GTX00741 Calreticulin 3 antibody.

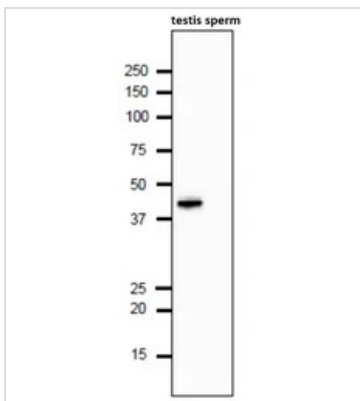
Upper : hematoxylin and eosin staining

Lower : Primary antibody

Dilution : 1:100

Fixation : 4% PFA in PBS, overnight, 4 degree C

Scale bar : 200 μm

**GTX00741 WB Image**

WB analysis of mouse testis or sperm tissue lysate using GTX00741 Calreticulin 3 antibody. This protein is testis specific and absent in mature sperm.

Dilution : 1:1000

Loading : 10 μg

SDS-PAGE : 10-20% gradient gel

Specifically expressed during male meiotic germ cell development. Not detectable in mature spermatids (Uniprot#P52194).



For full product information, images and publications, please visit our [website](#).