

## SPACA1 antibody

**Cat. No. GTX00749**

<b>Host</b>	Rabbit
<b>Clonality</b>	Polyclonal
<b>Isotype</b>	IgG
<b>Applications</b>	WB, ICC/IF
<b>Reactivity</b>	Mouse

**Package**  
100 µl

## Applications

**Application Note**

\*Optimal dilutions/concentrations should be determined by the researcher.

Suggested dilution	Recommended dilution
WB	1:1000
ICC/IF	1:100-1:500

Not tested in other applications.

**Calculated MW** 33 kDa. ([Note](#))

## Properties

<b>Form</b>	Liquid
<b>Buffer</b>	PBS, 50% Glycerol
<b>Preservative</b>	0.05% Sodium azide
<b>Storage</b>	Store as concentrated solution. Centrifuge briefly prior to opening vial. For short-term storage (1-2 weeks), store at 4°C. For long-term storage, aliquot and store at -20°C or below. Avoid multiple freeze-thaw cycles.
<b>Concentration</b>	1 mg/ml (Please refer to the vial label for the specific concentration.)
<b>Immunogen</b>	C-terminal peptide of mouse SPACA1 protein, QSPTDIPVHEDDALSEWNE, conjugated with KLH
<b>Purification</b>	Purified IgG
<b>Conjugation</b>	Unconjugated

**Note**

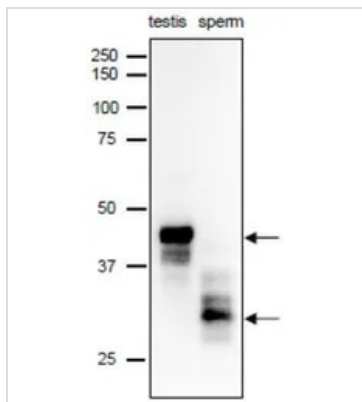
For laboratory research use only. Not for any clinical, therapeutic, or diagnostic use in humans or animals. Not for animal or human consumption.

Purchasers shall not, and agree not to enable third parties to, analyze, copy, reverse engineer or otherwise attempt to determine the structure or sequence of the product.



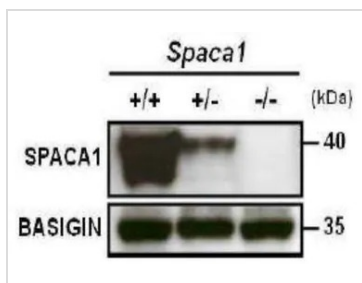
For full product information, images and publications, please visit our [website](#).

DATA IMAGES



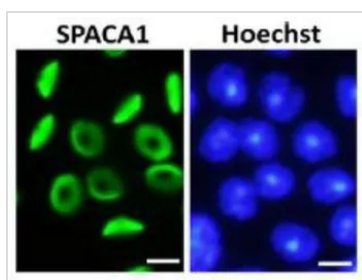
**GTX00749 WB Image**

WB analysis of various mouse tissue samples using GTX00749 SPACA1 antibody. Several proteins associated with sperm undergo modification during maturation. Multiple bands are reflection of post-translational modifications by glycosylation and phosphorylation. Dilution : 1:1000



**GTX00749 WB Image**

WB analysis of mouse testis tissue samples using GTX00749 SPACA1 antibody.  
 (+/+): Wild-type mouse  
 (+/-): Spaca1 single knock-out mice  
 (-/-): Double Spaca1 knock-out mice  
 Dilution : 1:1000  
 Loading : 20 µg



**GTX00749 ICC/IF Image**

ICC/IF analysis of mouse spermatids (7 round) using GTX00749 SPACA1 antibody.



For full product information, images and publications, please visit our [website](#).