

Necdin antibody

Cat. No. GTX00751

Host	Rabbit
Clonality	Polyclonal
Isotype	IgG
Applications	WB, ICC/IF, IHC-Fr, IP, ChIP assay, Purification
Reactivity	Human, Mouse, Rat, Chicken

Package
100 µg

Applications

Application Note

*Optimal dilutions/concentrations should be determined by the researcher.

Suggested dilution	Recommended dilution
WB	1:1000-1:3000
ICC/IF	1:500
IHC-Fr	1:500
IP	1:100
ChIP assay	1:100
Purification	Assay dependent

Note : Identification of Necdin interacting proteins by column conjugated with anti-Necdin antibody.

Not tested in other applications.

Calculated MW 37 kDa. ([Note](#))

Properties

Form	Liquid
Buffer	Filter-sterilized PBS, 50% Glycerol
Preservative	No preservatives
Storage	Store as concentrated solution. Centrifuge briefly prior to opening vial. For short-term storage (1-2 weeks), store at 4°C. For long-term storage, aliquot and store at -20°C or below. Avoid multiple freeze-thaw cycles.
Concentration	2 mg/ml (Please refer to the vial label for the specific concentration.)
Immunogen	Recombinant GST-fused mouse necdin (aa 83-325)
Purification	Protein A purified
Conjugation	Unconjugated



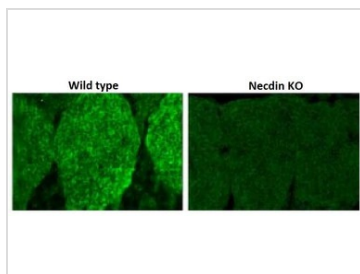
For full product information, images and publications, please visit our [website](#).

For laboratory research use only. Not for any clinical, therapeutic, or diagnostic use in humans or animals. Not for animal or human consumption.

Note

Purchasers shall not, and agree not to enable third parties to, analyze, copy, reverse engineer or otherwise attempt to determine the structure or sequence of the product.

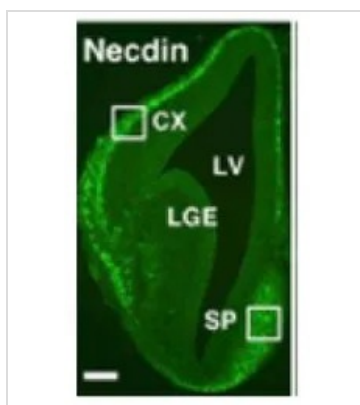
DATA IMAGES



GTX00751 IHC-Fr Image

IHC-Fr analysis of mouse cervical dorsal root ganglion tissue section (E14.5) using GTX00751 Necdin antibody.

Dilution : 1:500



GTX00751 IHC-Fr Image

IHC-Fr analysis of mouse forebrain tissue section (E13.5) using GTX00751 Necdin antibody.

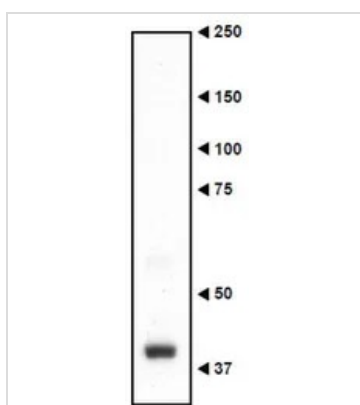
CX : Cortex

LV : Lateral Ventricle

LGE : Lateral Ganglionic Eminence

SP : Septum

Dilution : 1:500



GTX00751 WB Image

WB analysis of mouse embryo (E16.5) using GTX00751 Necdin antibody. The larger size reported here and elsewhere may reflect post-translational modifications such as ubiquitination and phosphorylation at several sites.

Dilution : 1:3000

Loading : 20 µg



For full product information, images and publications, please visit our [website](https://www.genetex.com).