

APP antibody

Cat. No. GTX00753

Host	Rabbit
Clonality	Polyclonal
Isotype	IgG
Applications	WB, ICC/IF
Reactivity	Human, Mouse, Rat

Package
100 µl

Applications

Application Note

*Optimal dilutions/concentrations should be determined by the researcher.

Suggested dilution	Recommended dilution
WB	1:500-1:3000
ICC/IF	1:500-1:1000

Not tested in other applications.

Calculated MW 87 kDa. ([Note](#))

Properties

Form	Liquid
Buffer	Serum
Preservative	0.05% Sodium azide
Storage	Store as concentrated solution. Centrifuge briefly prior to opening vial. For short-term storage (1-2 weeks), store at 4°C. For long-term storage, aliquot and store at -20°C or below. Avoid multiple freeze-thaw cycles.
Immunogen	Synthetic peptide corresponding to the N-terminus (aa 18-38) of human APP
Purification	Unpurified
Conjugation	Unconjugated

Note

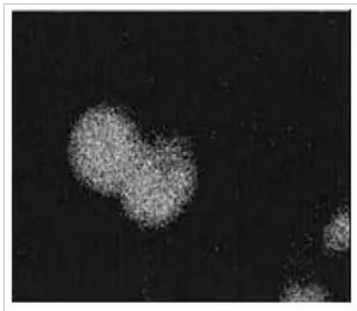
For laboratory research use only. Not for any clinical, therapeutic, or diagnostic use in humans or animals. Not for animal or human consumption.

Purchasers shall not, and agree not to enable third parties to, analyze, copy, reverse engineer or otherwise attempt to determine the structure or sequence of the product.



For full product information, images and publications, please visit our [website](#).

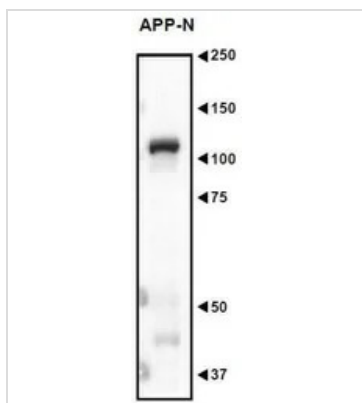
DATA IMAGES



GTX00753 ICC/IF Image

ICC/IF analysis of mouse dorsal root ganglion cells using GTX00753 APP antibody.

Dilution : 1:500



GTX00753 WB Image

WB analysis of mouse embryo (E16.5) using GTX00753 APP antibody.

APP undergoes various post-translational modification such as N- and O-glycosylation, proteolytic cleavage and phosphorylation.

Dilution : 1:500

Loading : 10 µg



For full product information, images and publications, please visit our [website](#).