

## Cholera toxin antibody

Cat. No. GTX00756

Host	Rabbit
Clonality	Polyclonal
Isotype	IgG
Applications	WB, IP, ELISA
Reactivity	Vibrio cholerae

Package  
100 µl

## Applications

## Application Note

\*Optimal dilutions/concentrations should be determined by the researcher.

Suggested dilution	Recommended dilution
WB	1:2000
IP	Assay dependent
ELISA	Assay dependent

Not tested in other applications.

## Properties

Form	Liquid
Buffer	Serum
Preservative	0.05% Sodium azide
Storage	Store as concentrated solution. Centrifuge briefly prior to opening vial. For short-term storage (1-2 weeks), store at 4°C. For long-term storage, aliquot and store at -20°C or below. Avoid multiple freeze-thaw cycles.
Immunogen	Cholera toxin and the toxoid purified from culture medium of <i>Vibrio cholerae</i> 569B strain
Purification	Unpurified
Conjugation	Unconjugated

## Note

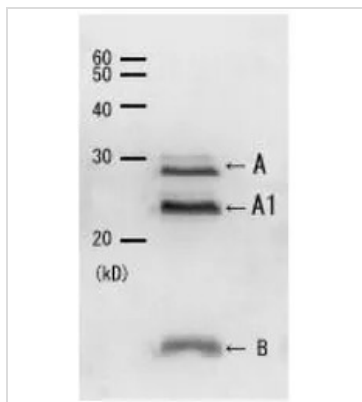
For laboratory research use only. Not for any clinical, therapeutic, or diagnostic use in humans or animals. Not for animal or human consumption.

Purchasers shall not, and agree not to enable third parties to, analyze, copy, reverse engineer or otherwise attempt to determine the structure or sequence of the product.



For full product information, images and publications, please visit our [website](#).

## DATA IMAGES



### GTX00756 WB Image

WB analysis of culture medium of *Vibrio cholerae* 569B strain using GTX00756 Cholera toxin antibody.

A, A1 and B indicate the subunits A, A1 and B, respectively. A2 subunit (5 kD) is too small to be seen by this analysis.

Dilution : 1:2000



For full product information, images and publications, please visit our [website](https://www.genetex.com).