

Lamin A + C antibody [GT1137]

Cat. No. GTX00774

Host	Rabbit
Clonality	Monoclonal
Isotype	IgG
Applications	WB, ICC/IF, IHC-P, IP
Reactivity	Human, Mouse, Rat

Package
100 µl

Applications

Application Note

*Optimal dilutions/concentrations should be determined by the researcher.

Suggested dilution	Recommended dilution
WB	1:50000 - 1:200000
ICC/IF	1:50 - 1:1000
IHC-P	1:50 - 1:1000
IP	1:50 - 1:200

Not tested in other applications.

Calculated MW 74 kDa. ([Note](#))

Properties

Form	Liquid
Buffer	PBS, 50% Glycerol
Preservative	0.02% Sodium azide
Storage	Store as concentrated solution. Centrifuge briefly prior to opening vial. For short-term storage (1-2 weeks), store at 4°C. For long-term storage, aliquot and store at -20°C or below. Avoid multiple freeze-thaw cycles.
Concentration	Batch dependent (Please refer to the vial label for the specific concentration.)
Immunogen	Recombinant protein of human Lamin A/C
Purification	Purified by affinity chromatography
Conjugation	Unconjugated

Note

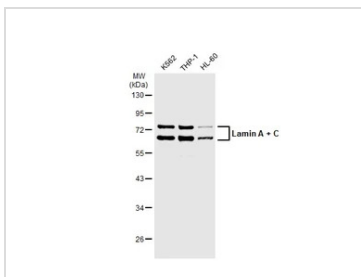
For laboratory research use only. Not for any clinical, therapeutic, or diagnostic use in humans or animals. Not for animal or human consumption.

Purchasers shall not, and agree not to enable third parties to, analyze, copy, reverse engineer or otherwise attempt to determine the structure or sequence of the product.



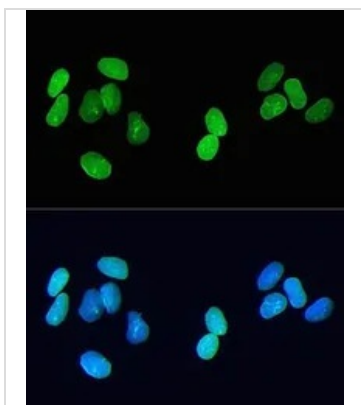
For full product information, images and publications, please visit our [website](#).

DATA IMAGES



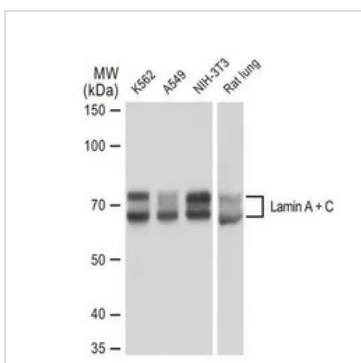
GTX00774 WB Image

Various whole cell extracts (30 µg) were separated by 10% SDS-PAGE, and the membrane was blotted with Lamin A + C antibody [GT1137] (GTX00774) diluted at 1:500. The HRP-conjugated anti-rabbit IgG antibody (GTX213110-01) was used to detect the primary antibody.



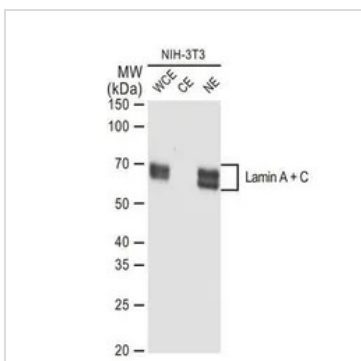
GTX00774 ICC/IF Image

ICC/IF analysis of U2OS cells using GTX00774 Lamin A + C antibody [GT1137].
 Green: Primary antibody
 Blue: DAPI
 Dilution : 1:200



GTX00774 WB Image

WB analysis of various samples using GTX00774 Lamin A + C antibody [GT1137].
 Dilution : 1:50000
 Loading : 25µg



GTX00774 WB Image

WB analysis of NIH-3T3 extracts using GTX00774 Lamin A + C antibody [GT1137].
 WCE : whole cell lysate
 CE : cytoplasmic extracts
 NE : nuclear extracts
 Dilution : 1:10000
 Loading : 25µg



For full product information, images and publications, please visit our [website](#).