

Mu Opioid receptor antibody

Cat. No. GTX00782

| | |
|--------------|----------------|
| Host | Rabbit |
| Clonality | Polyclonal |
| Isotype | IgG |
| Applications | WB, IHC-P, FCM |
| Reactivity | Human, Mouse |

Package
400 µl

Applications

Application Note

*Optimal dilutions/concentrations should be determined by the researcher.

| Suggested dilution | Recommended dilution |
|--------------------|----------------------|
| WB | 1:1000 |
| IHC-P | 1:10-1:50 |
| FCM | 1:10-1:50 |

Not tested in other applications.

Calculated MW 45 kDa. ([Note](#))

Properties

| | |
|---------------|--|
| Form | Liquid |
| Buffer | PBS |
| Preservative | 0.09% Sodium azide |
| Storage | Store as concentrated solution. Centrifuge briefly prior to opening vial. For short-term storage (1-2 weeks), store at 4°C. For long-term storage, aliquot and store at -20°C or below. Avoid multiple freeze-thaw cycles. |
| Concentration | Batch dependent (Please refer to the vial label for the specific concentration.) |
| Immunogen | KLH conjugated synthetic peptide between 161-187 amino acids from the Central region of human OPRM1. |
| Purification | Protein A purified followed by peptide affinity purification |
| Conjugation | Unconjugated |

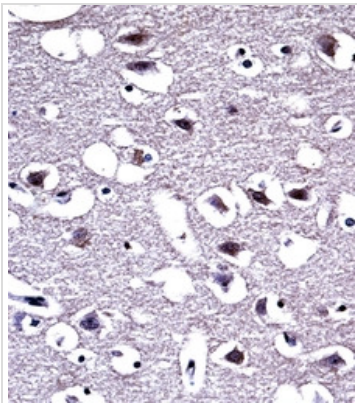
Note

For laboratory research use only. Not for any clinical, therapeutic, or diagnostic use in humans or animals. Not for animal or human consumption.

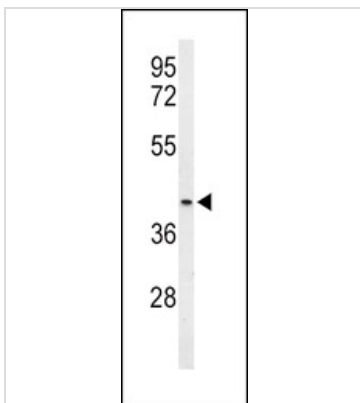
Purchasers shall not, and agree not to enable third parties to, analyze, copy, reverse engineer or otherwise attempt to determine the structure or sequence of the product.



For full product information, images and publications, please visit our [website](#).

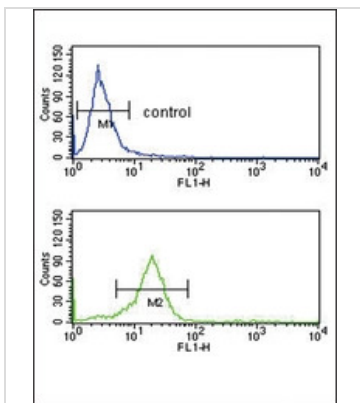
DATA IMAGES

GTX00782 IHC-P Image

IHC-P analysis of human brain tissue using GTX00782 Mu Opioid receptor antibody.


GTX00782 WB Image

WB analysis of mouse heart tissue lysate using GTX00782 Mu Opioid receptor antibody.

Loading : 35µg/lane


GTX00782 FCM Image

FACS analysis of K562 cells using GTX00782 Mu Opioid receptor antibody.

Bottom histogram : primary antibody

Top histogram : Negative control cell (Blank)



For full product information, images and publications, please visit our [website](https://www.genetex.com).