

MT2A antibody

Cat. No. GTX00789

Host	Rabbit
Clonality	Polyclonal
Isotype	IgG
Application	WB, IHC-P
Reactivity	Human, Rat

Package
100 µl

APPLICATION

Application Note

*Optimal dilutions/concentrations should be determined by the researcher.

Suggested dilution	Recommended dilution
WB	1:500 - 1:2000
IHC-P	1:50 - 1:200

Not tested in other applications.

Calculated MW 6 kDa. ([Note](#))

PROPERTIES

Form	Liquid
Buffer	PBS, 50% Glycerol
Preservative	0.02% Sodium azide
Storage	Store as concentrated solution. Centrifuge briefly prior to opening vial. For short-term storage (1-2 weeks), store at 4°C. For long-term storage, aliquot and store at -20°C or below. Avoid multiple freeze-thaw cycles.
Concentration	Batch dependent (Please refer to the vial label for the specific concentration.)
Immunogen	Recombinant fusion protein containing a sequence corresponding to amino acids 1-61 of human MT2A (NP_005944.1).
Purification	Purified by affinity chromatography
Conjugation	Unconjugated

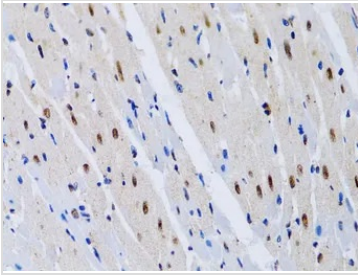
Note

For laboratory research use only. Not for any clinical, therapeutic, or diagnostic use in humans or animals. Not for animal or human consumption.

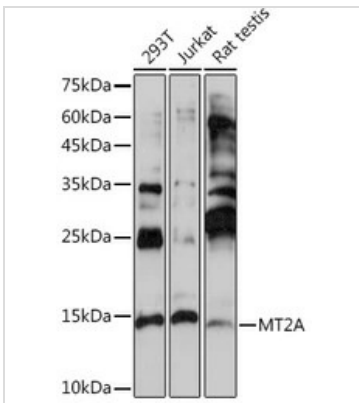
Purchasers shall not, and agree not to enable third parties to, analyze, copy, reverse engineer or otherwise attempt to determine the structure or sequence of the product.



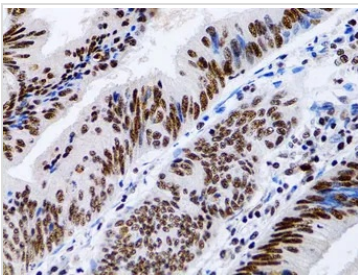
For full product information, images and publications, please visit our [website](#).

DATA IMAGES

GTx00789 IHC-P Image

IHC-P analysis of rat heart tissue using GTx00789 MT2A antibody.
Dilution : 1:200


GTx00789 WB Image

WB analysis of various sample lysates using GTx00789 MT2A antibody.
Dilution : 1:1000
Loading : 25µg per lane


GTx00789 IHC-P Image

IHC-P analysis of human colon cancer tissue using GTx00789 MT2A antibody.
Dilution : 1:200



For full product information, images and publications, please visit our [website](https://www.genetex.com).