

RUNX2 antibody

Cat. No. GTX00792

Host	Rabbit
Clonality	Polyclonal
Isotype	IgG
Application	WB, ICC/IF, IHC-P
Reactivity	Human, Mouse, Rat

Reference (1)
Package
100 µl

APPLICATION

Application Note

*Optimal dilutions/concentrations should be determined by the researcher.

Suggested dilution	Recommended dilution
WB	1:500-1:2000
ICC/IF	1:100-1:500
IHC-P	1:50-1:200

Not tested in other applications.

Calculated MW 57 kDa. ([Note](#))

PROPERTIES

Form	Liquid
Buffer	PBS, 150mM NaCl, 50% Glycerol
Preservative	0.02% Sodium azide
Storage	Store as concentrated solution. Centrifuge briefly prior to opening vial. For short-term storage (1-2 weeks), store at 4°C. For long-term storage, aliquot and store at -20°C or below. Avoid multiple freeze-thaw cycles.
Concentration	1 mg/ml (Please refer to the vial label for the specific concentration.)
Immunogen	A synthesized peptide derived from human RUNX2, corresponding to a region within the internal amino acids.
Purification	Purified by antigen-affinity chromatography From serum
Conjugation	Unconjugated

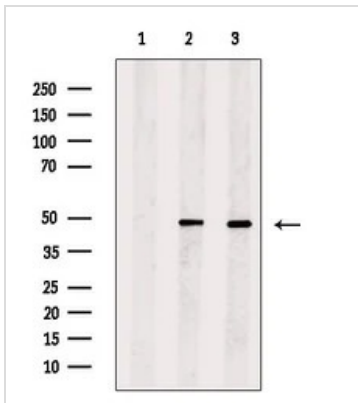
Note

For laboratory research use only. Not for any clinical, therapeutic, or diagnostic use in humans or animals. Not for animal or human consumption.

Purchasers shall not, and agree not to enable third parties to, analyze, copy, reverse engineer or otherwise attempt to determine the structure or sequence of the product.



For full product information, images and publications, please visit our [website](#).

DATA IMAGES

GTx00792 WB Image

WB analysis of various cell lysates using GTx00792 RUNX2 antibody.

Lane 1 : HeLa cell lysate, blocked with antigen-specific peptides

Lane 2 : HeLa cell lysate

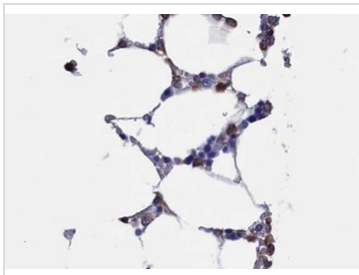
Lane 3 : MCF7 cell lysate


GTx00792 IHC-P Image

IHC-P analysis of mouse brain tissue using GTx00792 RUNX2 antibody.

Antigen retrieval : Heat mediated antigen retrieval step in citrate buffer

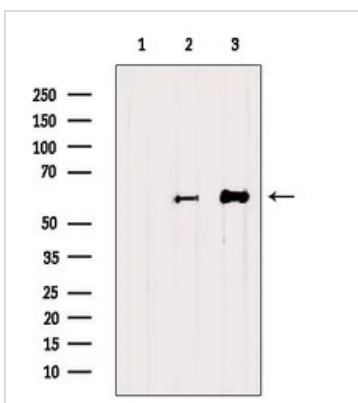
Dilution : 1:100


GTx00792 IHC-P Image

IHC-P analysis of human bone marrow tissue using GTx00792 RUNX2 antibody.

Antigen retrieval : Heat mediated antigen retrieval step in citrate buffer

Dilution : 1:100


GTx00792 WB Image

WB analysis of various tissue lysates using GTx00792 RUNX2 antibody.

Lane 1 : Mouse brain tissue lysate treated with blocking peptide

Lane 2 : Mouse brain tissue lysate

Lane 3 : Rat spleen tissue lysate



For full product information, images and publications, please visit our [website](https://www.genetex.com).