

TIE2 (phospho Ser1119) antibody

Cat. No. GTX00793

Host	Rabbit
Clonality	Polyclonal
Isotype	IgG
Applications	WB, ICC/IF, ELISA
Reactivity	Human, Mouse

Package
100 µl

Applications

Application Note

*Optimal dilutions/concentrations should be determined by the researcher.

Suggested dilution	Recommended dilution
WB	1:1000-1:3000
ICC/IF	1:100-1:500
ELISA	Assay dependent

Not tested in other applications.

Calculated MW 126 kDa. ([Note](#))

Properties

Form	Liquid
Buffer	PBS, 150mM NaCl, 50% Glycerol
Preservative	0.02% Sodium azide
Storage	Store as concentrated solution. Centrifuge briefly prior to opening vial. For short-term storage (1-2 weeks), store at 4°C. For long-term storage, aliquot and store at -20°C or below. Avoid multiple freeze-thaw cycles.
Concentration	1 mg/ml (Please refer to the vial label for the specific concentration.)
Immunogen	A synthesized peptide derived from human TIE2 around the phosphorylation site of Ser1119.
Purification	Purified by sequential chromatography on phospho-peptide and non-phospho-peptide columns From serum
Conjugation	Unconjugated

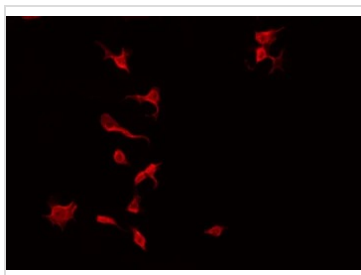
Note

For laboratory research use only. Not for any clinical, therapeutic, or diagnostic use in humans or animals. Not for animal or human consumption.

Purchasers shall not, and agree not to enable third parties to, analyze, copy, reverse engineer or otherwise attempt to determine the structure or sequence of the product.



For full product information, images and publications, please visit our [website](#).

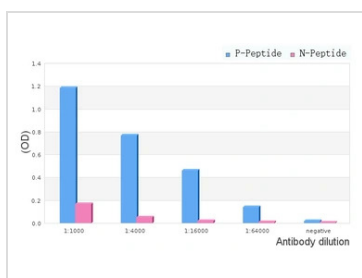
DATA IMAGES

GTX00793 ICC/IF Image

ICC/IF analysis of PFA-fixed NIH-3T3 cells using GTX00793 TIE2 (Phospho-Ser1119) antibody.

Red : Primary antibody

Permeabilization : 0.1% Triton X-100

Dilution : 1:200

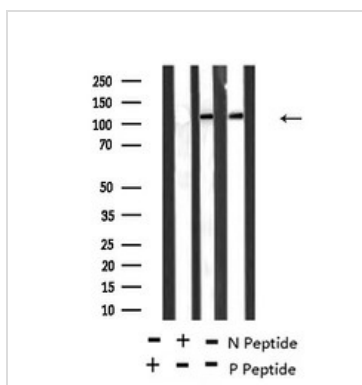

GTX00793 ELISA Image

ELISA analysis of phospho- and non phospho- immunogen peptide using GTX00793 Phospho-TIE2 (Ser1119) antibody.

P-peptide : phospho-peptide

N-peptide : non-phospho-peptide

Peptides concentration : 1µg/ml


GTX00793 WB Image

WB analysis of EGF treated 293 cell lysates using GTX00793 TIE2 (Phospho-Ser1119) antibody pre-incubated with phospho- or non-phospho- peptide.

P-peptide : phospho-peptide

N-peptide : non-phospho-peptide



For full product information, images and publications, please visit our [website](https://www.genetex.com).