

## TIE2 (phospho Tyr897) antibody

Cat. No. GTX00795

Host	Rabbit
Clonality	Polyclonal
Isotype	IgG
Applications	WB, IHC-P, ELISA
Reactivity	Human, Mouse

Package  
100 µl

## Applications

## Application Note

\*Optimal dilutions/concentrations should be determined by the researcher.

Suggested dilution	Recommended dilution
WB	1:500-1:2000
IHC-P	1:50-1:200
ELISA	Assay dependent

Not tested in other applications.

Calculated MW 126 kDa. ([Note](#))

## Properties

Form	Liquid
Buffer	PBS, 150mM NaCl, 50% Glycerol
Preservative	0.02% Sodium azide
Storage	Store as concentrated solution. Centrifuge briefly prior to opening vial. For short-term storage (1-2 weeks), store at 4°C. For long-term storage, aliquot and store at -20°C or below. Avoid multiple freeze-thaw cycles.
Concentration	1 mg/ml (Please refer to the vial label for the specific concentration.)
Immunogen	A synthesized peptide derived from human Tie2 around the phosphorylation site of Tyr897.
Purification	Purified by sequential chromatography on phospho-peptide and non-phospho-peptide columns From serum
Conjugation	Unconjugated

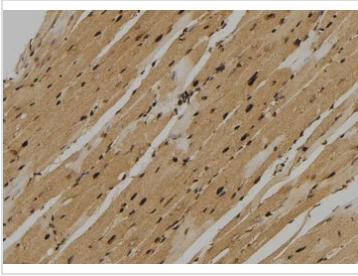
## Note

For laboratory research use only. Not for any clinical, therapeutic, or diagnostic use in humans or animals. Not for animal or human consumption.

Purchasers shall not, and agree not to enable third parties to, analyze, copy, reverse engineer or otherwise attempt to determine the structure or sequence of the product.



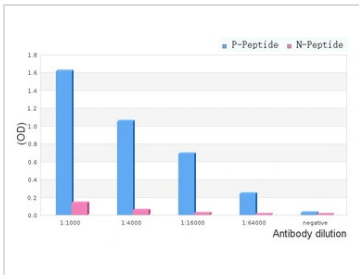
For full product information, images and publications, please visit our [website](#).

**DATA IMAGES**

**GTx00795 IHC-P Image**

IHC-P analysis of mouse heart tissue using GTx00795 TIE2 (phospho Tyr897) antibody.

Antigen retrieval : Heat mediated antigen retrieval step in citrate buffer

Dilution : 1:100

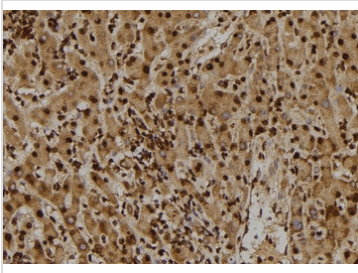

**GTx00795 ELISA Image**

ELISA analysis of phospho- and non phospho- immunogen peptide using GTx00795 TIE2 (phospho Tyr897) antibody.

P-peptide : phospho-peptide

N-peptide : non-phospho-peptide

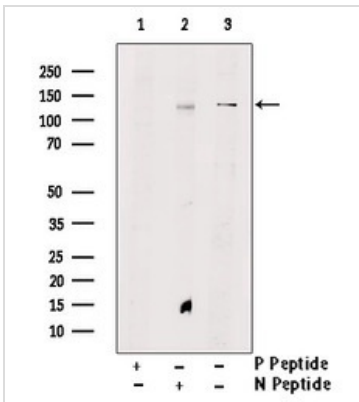
Peptides concentration : 1µg/ml


**GTx00795 IHC-P Image**

IHC-P analysis of human liver tissue using GTx00795 TIE2 (phospho Tyr897) antibody.

Antigen retrieval : Heat mediated antigen retrieval step in citrate buffer

Dilution : 1:100


**GTx00795 WB Image**

WB analysis of NIH-3T3 cell lysates using GTx00795 TIE2 (phospho Tyr897) antibody pre-incubated with phospho- or non-phospho- peptide.

P-peptide : phospho-peptide

N-peptide : non-phospho-peptide



For full product information, images and publications, please visit our [website](https://www.genetex.com).